



INITIA 3 DUO VMC

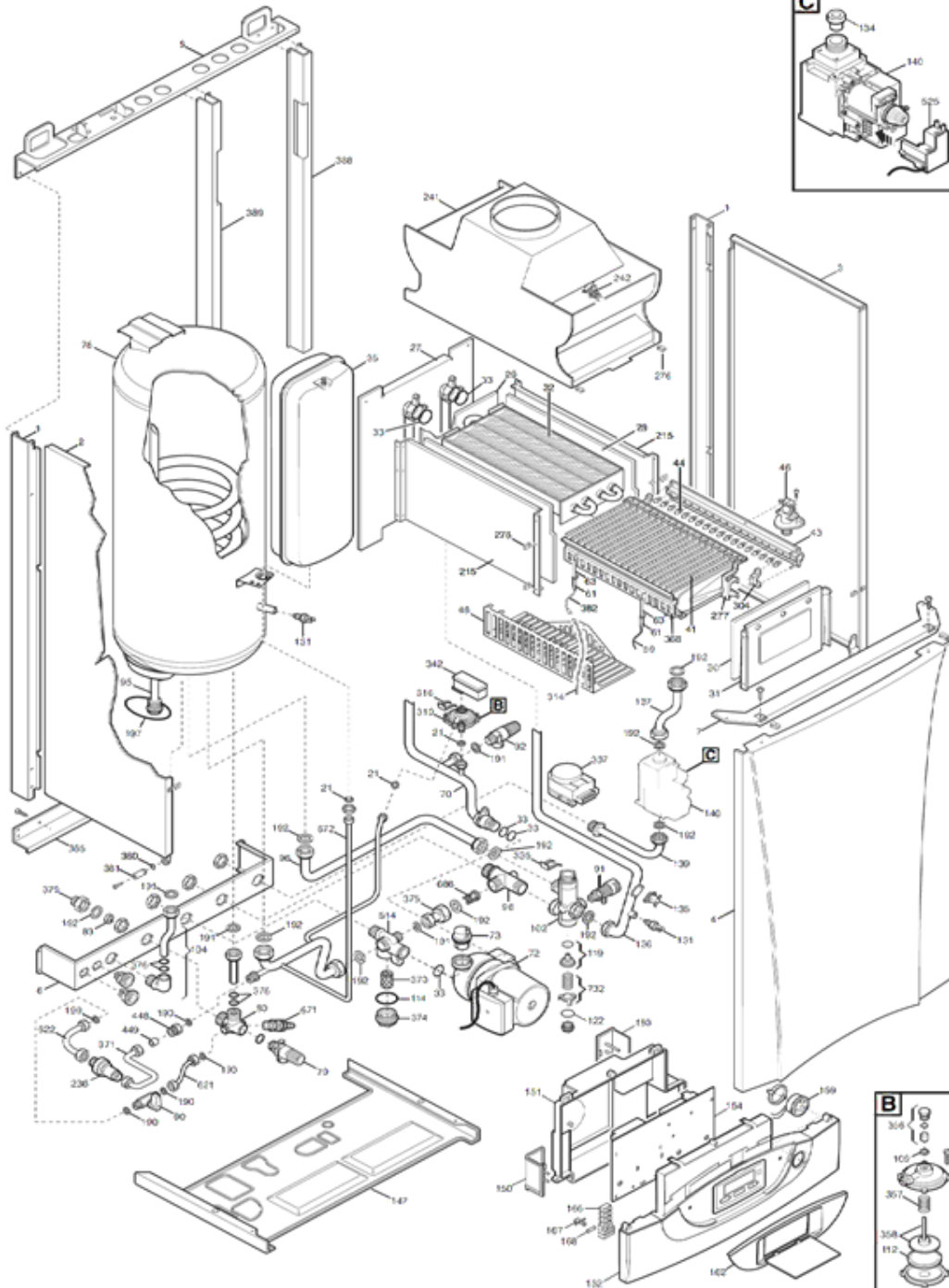
N° 1738

CPN454243120

INITIA 3 3.24 VMC

Tab 250

Tab 250



INITIA 3 DUO 3.24 VMC - CPN454243120

| Repère | Référence | Désignation | Quantité |
|--------|-----------|---|----------|
| 1 | SX5116480 | MONTANT LATERAL (5116480) | 1.000 |
| 102 | SX5663040 | ENS.VANNE 3 VOIES (5663040) | 1.000 |
| 104 | SX5683630 | CONNEXION DEPART ECS | 1.000 |
| 109 | SX5207810 | JOINT (x3) (5207810) | 1.000 |
| 112 | SX5405320 | MEMBRANE SECURITE DEBIT D'EAU (x3) (PDM5405320) | 1.000 |
| 114 | SX5403820 | JOINT O-RING (x3) (5403820) | 1.000 |
| 119 | SX0605760 | CLAPET CHAUFFAGE V3V (605760) | 1.000 |
| 122 | SX5405370 | O-RING "FILTRE SANITAIRE" (x3) (5405370) | 1.000 |
| 131 | SX8434820 | SONDE CTN CH et SN MURALE (8434820) | 1.000 |
| 134 | SX5211760 | DIAPHRAGME GAZ 4,2mm (5211760) | 1.000 |
| 135 | SX9950760 | SECURITE SURCHAUFFE 105° (9950760) | 1.000 |
| 136 | SX5662790 | TUBE V3V/ECHANGEUR (5662790) | 1.000 |
| 137 | SX5663200 | TUBE GAZ (5663200) | 1.000 |
| 139 | SX5662880 | TUBE ENTREE GAZ (5662880) | 1.000 |
| 140 | SX5658830 | VANNE GAZ SIT(845 SIGMA) | 1.000 |
| 147 | SX5116500 | PANNEAU INFERIEUR JAQUETTE (5116500) | 1.000 |
| 150 | SX5412180 | COUVERCLE (5412180) | 1.000 |
| 151 | SX5412250 | COUVERCLE BOITE ELECTRIQUE (5412250) | 1.000 |
| 152 | SX5688010 | PANNEAU CDE INITIA DUO | 1.000 |
| 153 | SX5407660 | COUVERCLE BRANCHE.ELECTRIQUE (5407660) | 1.000 |
| 154 | SX5687010 | CIRCUIT IMPRIME BetP SERIE 3 (5687010) | 1.000 |
| 162 | SX5688020 | PLASTRON SERIGRAPHIE PT BOIT | 1.000 |
| 166 | SX8421590 | BORNIER DE RACCORDEMENT (PDM8421590) | 1.000 |
| 167 | SX5405340 | PORTE-FUSIBLES (x3) (PDM5405340) | 1.000 |
| 168 | SX9950580 | FUSIBLES 2A 250V (X10) (9950580) | 1.000 |
| 169 | SX9951020 | MANOMETRE AVEC SUPPORT (9951020) | 1.000 |
| 169 | SX9951830 | MANOMETRE AVEC SUPPORT (9951830) | 1.000 |
| 190 | SX5404970 | JOINT 3/8" (x10) (PDM5404970) | 1.000 |
| 191 | SX5408970 | JOINT G1/2" (5408970) | 1.000 |
| 192 | SX5404650 | JOINT G3/4" 17x24x2 (X10) # | 1.000 |
| 197 | SX5412820 | JOINT OR 44,17x1,78 (X3) (5412820) | 1.000 |
| 2 | SX5684630 | PANNEAU COTE GAUCHE | 1.000 |
| 21 | SX5402050 | JOINT 6,1x11,5x1,5 (X3) | 1.000 |
| 215 | SX5106570 | COTE CHAMBRE DE COMBUSTION FF (5106570) | 1.000 |
| 236 | SX5625310 | DISCONNECTEUR CALEFFI DUO (PDM5625310) | 1.000 |
| 241 | SX5662420 | ANTIREFOULEUR 3.24 VMC (5662420) | 1.000 |
| 242 | SX0613090 | SECURITE DE DEBORDEMENT 48° (613090) | 1.000 |
| 27 | SX5106560 | PANNEAU ARRIERE CHAMBRE ETANCHE (5106560) | 1.000 |
| 276 | SX1340440 | CLIP (1340440) | 1.000 |
| 277 | SX5630300 | SUPPORT BRULEUR (5630300) | 1.000 |
| 28 | SX5213170 | PANNEAU ISOLANT LATERAL (5213170) | 1.000 |
| 29 | SX5213250 | PANNEAU ISOLANT ARRIERE (5213250) | 1.000 |
| 3 | SX5684690 | PANNEAU COTE DROIT (5684690) | 1.000 |
| 30 | SX5213410 | PANNEAU ISOLANT AVANT (5213410) | 1.000 |
| 304 | SX5208400 | SUPPORT NOURRICE (5208400) | 1.000 |
| 31 | SX5108420 | PANNEAU AVANT CHAMBRE COMBUSTION (5108420) | 1.000 |
| 310 | SX5641850 | PRESSOSTAT POMPE (5641850) | 1.000 |
| 314 | SX8419750 | CABLE ELECTRODES D'IONISATION (8419750) | 1.000 |

INITIA 3 DUO 3.24 VMC - CPN454243120

| Repère | Référence | Désignation | Quantité |
|--------|-----------|---|----------|
| 316 | SX8380610 | RESSORT FIX.MICRO (8380610) | 1.000 |
| 32 | SX5646410 | ECHANGEUR PRINCIPAL (5646410) | 1.000 |
| 33 | SX5403130 | O-RING 22X3 EPDM (x3) (5403130) | 1.000 |
| 336 | SX8380680 | RESSORT FIX MOTEUR V3V | 1.000 |
| 337 | SX5647340 | MOTEUR V3V ELBI | 1.000 |
| 342 | SX5641800 | MICRO-INTERRUPTEUR V3V | 1.000 |
| 35 | SX5629130 | VASE D'EXPANSION 7,5L | 1.000 |
| 356 | SX5634820 | BOUCHON AVANT (GROUPE) (5634820) | 1.000 |
| 357 | SX8380600 | RESSORT SECURITE DEBIT D'EAU (8380600) | 1.000 |
| 358 | SX5634830 | BOUCHON PRESSOSTAT (5634830) | 1.000 |
| 365 | SX5106530 | TRAVERSE ARRIERE INFERIEURE | 1.000 |
| 368 | SX5106600 | SUPPORT BRULEUR | 1.000 |
| 371 | SX5663240 | TUBE DISCONNECTEUR /CIRCUIT CHAUFFAGE | 1.000 |
| 373 | SX5109080 | FILTRE CHAUFFAGE (PDM5109080) | 1.000 |
| 374 | SX5212030 | BOUCHON PORTE FILTRE M30 | 1.000 |
| 375 | SX5663030 | TUBE BY-PASS (5663030) | 1.000 |
| 376 | SX5400650 | JOINT 13,94x2,62 (5400650) | 1.000 |
| 379 | SX5206120 | REDUCTION FM G 3/4-1/2 (5206120) | 1.000 |
| 380 | SX5400620 | JOINT 4,47x1,78 (5400620) | 1.000 |
| 381 | SX5209830 | PIVOT PANNEAU COMMANDE (5209830) | 1.000 |
| 382 | SX8416860 | CABLE ELECTRODES D'IONISATION (8416860) | 1.000 |
| 388 | SX5107240 | TRAVERSE DROITE | 1.000 |
| 389 | SX5106540 | TRAVERSE GAUCHE | 1.000 |
| 4 | SX5116850 | PANNEAU AVANT INITIA3/ ST/ HTE DUO | 1.000 |
| 41 | SX5630310 | BRULEUR 18 BECS (5630310) | 1.000 |
| 43 | SX5633950 | NOURRICE PTE INJECTEUR 18T D:1,18 (5633950) | 1.000 |
| 44 | SX5666900 | KIT INJECTEURS D.1,18 GN | 1.000 |
| 44 | SX5666910 | KIT INJECTEURS D.0,69 BP | 1.000 |
| 448 | SX5209230 | PORTE CLAPET ANTIRETOUR | 1.000 |
| 449 | SX5640030 | CLAPET ANTI RETOUR (5640030) | 1.000 |
| 46 | SX0607990 | RACCORD NOURRICE (607990) | 1.000 |
| 48 | SX5107050 | DESSOUS (5107050) | 1.000 |
| 5 | SX5109740 | TRAVERSE SUPERIEURE ARRIERE (5109740) | 1.000 |
| 514 | SX5663010 | RACCORD R.C./POMPE/FILTRE (5663010) | 1.000 |
| 525 | SX8419570 | ALLUMEUR VG SIT | 1.000 |
| 59 | SX8419380 | CABLE ELECTRODE ALLUMAGE L=400 (x2) (8419380) | 1.000 |
| 6 | SX5106550 | TRAVERSE PLATINE HYDRAULIQUE (5106550) | 1.000 |
| 61 | SX5404920 | PROTECTION ELECTRODE (x4) (5404920) | 1.000 |
| 621 | SX5663120 | TUBE REMPLISSAGE /CHAUFFAGE (5663120) | 1.000 |
| 622 | SX5622860 | TUBE BALLON/DISCONNECTEUR | 1.000 |
| 63 | SX8422570 | ELECTRODE ALLUMAGE (x4) (8422570) | 1.000 |
| 671 | SX5646780 | ROBINET DE VIDANGE (5646780) | 1.000 |
| 672 | SX5663070 | TUBE SORTIE SERP./RAC./PRES. (5663070) | 1.000 |
| 686 | SX5663020 | CLAPET ANTI-RETOUR (5663020) | 1.000 |
| 7 | SX5107950 | TRAVERSE SUPERIEURE AVANT (5107950) | 1.000 |
| 70 | SX5662800 | TUBE POMPE/ECHANGEUR (5662800) | 1.000 |
| 72 | SX5687280 | POMPE UP 15-50 AO AV.CONN.2V (5687280) | 1.000 |
| 73 | SX0607290 | DEGAZEUR (607290) | 1.000 |

INITIA 3 DUO 3.24 VMC - CPN454243120

| Repère | Référence | Désignation | Quantité |
|--------|-----------|---|----------|
| 732 | SX0620210 | RESSORT (0620210) | 1.000 |
| 78 | SX5688340 | BALLON (5688340) | 1.000 |
| 79 | SX9950610 | SOUPAPE DE SECURITE 7BARS | 1.000 |
| 80 | SX5212070 | RACCORD ENTREE SANITAIRE (5212070) | 1.000 |
| 83 | SX5620090 | LIMITEUR DEBIT SANIT.12L/MN | 1.000 |
| 90 | SX5622840 | ROBINET DE REMPLISSAGE (5622840) | 1.000 |
| 91 | SX5652030 | ROBINET DE VIDANGE (PDM5652030) | 1.000 |
| 92 | SX9950600 | SOUPAPE DE SECURITE 3BARS | 1.000 |
| 95 | SX5679910 | ANODE MAGNESIUM /BALL.3.33HTE (5679910) | 1.000 |
| 96 | SX5663060 | TUBE V3V/ENTREE SERPENTIN (5663060) | 1.000 |
| 98 | SX5212040 | TUBE BY-PASS CHAUFFAGE (5212040) | 1.000 |
| 999 | SX8414620 | CABLE M1 ALIM ELEC (8414620) | 1.000 |
| 999 | SX8512710 | CABLE CN2-11/BASSE TENSION CF | 1.000 |
| 999 | SX8512310 | CABLE CN10/M1-ALIM (8512310) | 1.000 |
| 999 | SX8512730 | CABLE MASSE | 1.000 |
| 999 | SX8512840 | CABLE CN1/POMP-V3VF | 1.000 |