



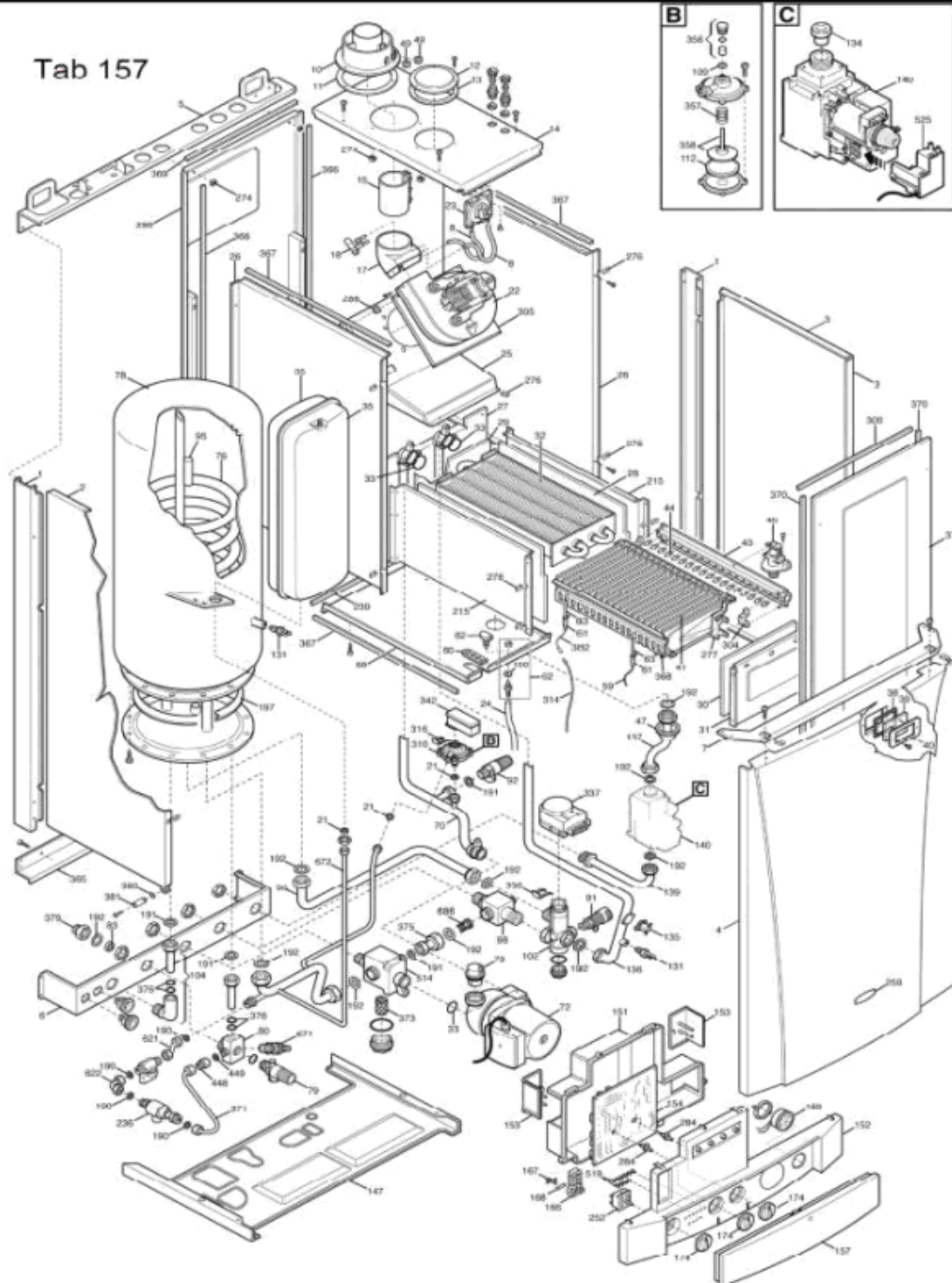
INITIA DUO FF

N° 1355

CPN437243090

INITIA DUO 3.24 FF

Tab 157



| Repère | Référence | Désignation                                     | Quantité |
|--------|-----------|---|----------|
| 1      | SX5106510 | MONTANT LATERAL                                 | 1.000    |
| 1      | SX5116480 | MONTANT LATERAL (5116480)                       | 1.000    |
| 10     | SX5207060 | RACCORDEMENT VENTOUSE (5207060)                 | 1.000    |
| 102    | SX5663040 | ENS.VANNE 3 VOIES (5663040)                     | 1.000    |
| 104    | SX5663110 | CONNEXION DEPART ECS (5663110)                  | 1.000    |
| 109    | SX5207810 | JOINT (x3) (5207810)                            | 1.000    |
| 11     | SX5407890 | JOINT VENTOUSE CAOUTCHOUC (5407890)             | 1.000    |
| 112    | SX5405320 | MEMBRANE SECURITE DEBIT D'EAU (x3) (PDM5405320) | 1.000    |
| 12     | SX5108690 | OBTURATEUR (5108690)                            | 1.000    |
| 13     | SX5407400 | JOINT OBTURATEUR DECOUPE (x3)                   | 1.000    |
| 131    | SX8434820 | SONDE CTN CH et SN MURALE (8434820)             | 1.000    |
| 134    | SX5211760 | DIAPHRAGME GAZ 4,2mm (5211760)                  | 1.000    |
| 134    | SX5211240 | DIAPHRAGME GAZ 4,8mm (5211240)                  | 1.000    |
| 135    | SX9950760 | SECURITE SURCHAUFFE 105° (9950760)              | 1.000    |
| 136    | SX5662790 | TUBE V3V/ECHANGEUR (5662790)                    | 1.000    |
| 137    | SX5663200 | TUBE GAZ (5663200)                              | 1.000    |
| 139    | SX5662880 | TUBE ENTREE GAZ (5662880)                       | 1.000    |
| 14     | SX5658850 | PANNEAU SUPERIEUR DE CAISSON (5658850)          | 1.000    |
| 140    | SX5658830 | VANNE GAZ SIT(845 SIGMA)                        | 1.000    |
| 147    | SX5109720 | PANNEAU INFERIEUR (5109720)                     | 1.000    |
| 147    | SX5116500 | PANNEAU INFERIEUR JAQUETTE (5116500)            | 1.000    |
| 15     | SX5645800 | JOINT SORTIE EXTRACTEUR (5645800)               | 1.000    |
| 151    | SX5408470 | COUVERCLE BOITIER ELECTRIQUE (5408470)          | 1.000    |
| 152    | SX5663570 | PANNEAU COMMAND.3.24FF INITIA (5663570)         | 1.000    |
| 153    | SX5407660 | COUVERCLE BRANCHE.ELECTRIQUE (5407660)          | 1.000    |
| 154    | SX5669060 | CIRCUIT IMPRIME LMU 33 (5669060)                | 1.000    |
| 154    | SX5657840 | CIRCUIT IMPRIME INECO MAW UNIVERSAL (5657840)   | 1.000    |
| 154    | SX5678250 | CIRCUIT IMPRIME LMU33 VANN.SIT (5678250)        | 1.000    |
| 157    | SX5408460 | PORTE BOITIER ELECTRIQUE (5408460)              | 1.000    |
| 166    | SX8421590 | BORNIER DE RACCORDEMENT (PDM8421590)            | 1.000    |
| 167    | SX5405340 | PORTE-FUSIBLES (x3) (PDM5405340)                | 1.000    |
| 168    | SX8421410 | FUSIBLE 2A (x10) (PDM8421410)                   | 1.000    |
| 169    | SX5656220 | MANOMETRE AVEC SUPPORT (5656220)                | 1.000    |
| 17     | SX0600490 | COUDE EVACUATION FUMEEES                        | 1.000    |
| 174    | SX5408630 | BOUTON POTENTIOMETRE LUNA (5408630)             | 1.000    |
| 18     | SX5407050 | VENTURI (5407050)                               | 1.000    |
| 190    | SX5404970 | JOINT 3/8" (x10) (PDM5404970)                   | 1.000    |
| 191    | SX5408970 | JOINT G1/2" (5408970)                           | 1.000    |
| 192    | SX5404650 | JOINT G3/4" 17x24x2 (X10) #                     | 1.000    |
| 197    | SX9950380 | JOINT DE BRIDE (9950380)                        | 1.000    |
| 2      | SX5663160 | PANNEAU COTE GAUCHE (5663160)                   | 1.000    |
| 2      | SX5684630 | PANNEAU COTE GAUCHE                             | 1.000    |
| 21     | SX5402050 | JOINT 6,1x11,5x1,5 (X3)                         | 1.000    |
| 215    | SX5106570 | COTE CHAMBRE DE COMBUSTION FF (5106570)         | 1.000    |
| 22     | SX5628070 | EXTRACTEUR (FIME) (PDM5628070)                  | 1.000    |
| 22     | SX5632530 | EXTRACTEUR (SEL) (5632530)                      | 1.000    |
| 23     | SX5655120 | PRESSOSTAT(TRIDELTA) (5655120)                  | 1.000    |
| 23     | SX5629560 | PRESSOSTAT HONEYWELL (5629560)                  | 1.000    |

| Repère | Référence | Désignation                                | Quantité |
|--------|-----------|--|----------|
| 23     | SX0618470 | PRESSOSTAT 1,2MB HONEYWELL                 | 1.000    |
| 236    | SX5625310 | DISCONNECTEUR CALEFFI DUO (PDM5625310)     | 1.000    |
| 239    | SX5404380 | JOINT L=250 (5404380)                      | 1.000    |
| 24     | SX5402490 | TUBE SILICONE "VANNE GAZ" (x3) (5402490)   | 1.000    |
| 25     | SX5634580 | HOTTE EVACUATION FUMEEES (5634580)         | 1.000    |
| 252    | SX8434550 | SELECTEUR (x2) (8434550)                   | 1.000    |
| 26     | SX5107440 | PANNEAU COTE CHAMBRE ETANCHE (5107440)     | 1.000    |
| 27     | SX5106560 | PANNEAU ARRIERE CHAMBRE ETANCHE (5106560)  | 1.000    |
| 274    | SX8240550 | ECROU M4 (8240550)                         | 1.000    |
| 276    | SX1340440 | CLIP (1340440)                             | 1.000    |
| 277    | SX5630300 | SUPPORT BRULEUR (5630300)                  | 1.000    |
| 28     | SX5213170 | PANNEAU ISOLANT LATERAL (5213170)          | 1.000    |
| 28     | SX5210310 | PANNEAU ISOLANT LATERAL (5210310)          | 1.000    |
| 286    | SX8240530 | ECROU (8240530)                            | 1.000    |
| 29     | SX5213250 | PANNEAU ISOLANT ARRIERE (5213250)          | 1.000    |
| 29     | SX5210300 | PANNEAU ISOLANT ARRIERE (5210300)          | 1.000    |
| 298    | SX5621510 | PANNEAU ARRIERE CHAMBRE ETANCHE (5621510)  | 1.000    |
| 3      | SX5684620 | PANNEAU COTE DROIT (5684620)               | 1.000    |
| 3      | SX5663140 | PANNEAU COTE DROIT (5663140)               | 1.000    |
| 30     | SX5210320 | PANNEAU ISOLANT AVANT (5210320)            | 1.000    |
| 30     | SX5213410 | PANNEAU ISOLANT AVANT (5213410)            | 1.000    |
| 300    | SX5404420 | JOINT L=235mm (5404420)                    | 1.000    |
| 304    | SX5208400 | SUPPORT NOURRICE (5208400)                 | 1.000    |
| 305    | SX5107430 | PLAQUE EXTRACTEUR (5107430)                | 1.000    |
| 31     | SX5108420 | PANNEAU AVANT CHAMBRE COMBUSTION (5108420) | 1.000    |
| 310    | SX5641850 | PRESSOSTAT POMPE (5641850)                 | 1.000    |
| 314    | SX8419750 | CABLE ELECTRODES D'IONISATION (8419750)    | 1.000    |
| 316    | SX8380610 | RESSORT FIX.MICRO (8380610)                | 1.000    |
| 32     | SX5622180 | ECHANGEUR PRINCIPAL C&M (5622180)          | 1.000    |
| 33     | SX5403130 | O-RING 22X3 EPDM (x3) (5403130)            | 1.000    |
| 336    | SX8380680 | RESSORT FIX MOTEUR V3V                     | 1.000    |
| 337    | SX5647340 | MOTEUR V3V ELBI                            | 1.000    |
| 342    | SX5641800 | MICRO-INTERRUPTEUR V3V                     | 1.000    |
| 35     | SX5629130 | VASE D'EXPANSION 7,5L                      | 1.000    |
| 356    | SX5634820 | BOUCHON AVANT (GROUPE) (5634820)           | 1.000    |
| 357    | SX8380600 | RESSORT SECURITE DEBIT D'EAU (8380600)     | 1.000    |
| 358    | SX5634830 | BOUCHON PRESSOSTAT (5634830)               | 1.000    |
| 365    | SX5106530 | TRAVERSE ARRIERE INFERIEURE                | 1.000    |
| 366    | SX5404370 | JOINT L=665 (5404370)                      | 1.000    |
| 367    | SX5404390 | JOINT L=430 (5404390)                      | 1.000    |
| 368    | SX5634290 | SUPPORT BRULEUR (5634290)                  | 1.000    |
| 369    | SX5404400 | JOINT L=205 (5404390)                      | 1.000    |
| 37     | SX5621590 | PANNEAU AVANT CHAMBRE ETANCHE (5621590)    | 1.000    |
| 370    | SX5404410 | JOINT L=655 (5404410)                      | 1.000    |
| 371    | SX5663240 | TUBE DISCONNECTEUR /CIRCUIT CHAUFFAGE      | 1.000    |
| 373    | SX5109080 | FILTRE CHAUFFAGE (PDM5109080)              | 1.000    |
| 375    | SX5663030 | TUBE BY-PASS (5663030)                     | 1.000    |
| 376    | SX5400650 | JOINT 13,94x2,62 (5400650)                 | 1.000    |

| Repère | Référence | Désignation                                   | Quantité |
|--------|-----------|---|----------|
| 379    | SX5206120 | REDUCTION FM G 3/4-1/2 (5206120)              | 1.000    |
| 38     | SX5401610 | JOINT HUBLLOT (x3) (5401610)                  | 1.000    |
| 380    | SX5400620 | JOINT 4,47x1,78 (5400620)                     | 1.000    |
| 381    | SX5209830 | PIVOT PANNEAU COMMANDE (5209830)              | 1.000    |
| 382    | SX8416860 | CABLE ELECTRODES D'IONISATION (8416860)       | 1.000    |
| 39     | SX5203930 | HUBLLOT (5203930)                             | 1.000    |
| 4      | SX5663940 | PANNEAU AVANT INITIA DUO (5663940)            | 1.000    |
| 40     | SX5103360 | COUVERCLE HUBLLOT (5103360)                   | 1.000    |
| 41     | SX5630310 | BRULEUR 18 BECS (5630310)                     | 1.000    |
| 43     | SX5633950 | NOURRICE PTE INJECTEUR 18T D:1,18 (5633950)   | 1.000    |
| 43     | SX5634110 | NOURRICE PORTE INJECTEUR 18T D:0,69 (5634110) | 1.000    |
| 44     | SX5666920 | SACH.INJECTEURS 1,18+DIAPH.4,2 G.N            | 1.000    |
| 44     | SX5666910 | KIT INJECTEURS D.0,69 BP                      | 1.000    |
| 448    | SX5209230 | PORTE CLAPET ANTIRETOUR                       | 1.000    |
| 449    | SX5640030 | CLAPET ANTI RETOUR (5640030)                  | 1.000    |
| 46     | SX0607990 | RACCORD NOURRICE (607990)                     | 1.000    |
| 47     | SX5404740 | JOINT NOURRICE/CAISSON (x3) (5404740)         | 1.000    |
| 49     | SX5207070 | BOUCHON RACCORDEMENT VENTOUSE (5207070)       | 1.000    |
| 5      | SX5109740 | TRAVERSE SUPERIEURE ARRIERE (5109740)         | 1.000    |
| 514    | SX5663010 | RACCORD R.C/POMPE/FILTRE (5663010)            | 1.000    |
| 519    | SX5407780 | LED (5407780)                                 | 1.000    |
| 525    | SX8419060 | ALLUMEUR NAC-SIT (8419060)                    | 1.000    |
| 59     | SX8419380 | CABLE ELECTRODE ALLUMAGE L=400 (x2) (8419380) | 1.000    |
| 6      | SX5106550 | TRAVERSE PLATINE HYDRAULIQUE (5106550)        | 1.000    |
| 60     | SX5406600 | JOINT ELECTRODE D'ALLUMAGE (5406600)          | 1.000    |
| 61     | SX5404920 | PROTECTION ELECTRODE (x4) (5404920)           | 1.000    |
| 62     | SX5643090 | RACCORD PRISE DE PRESSION (5643090)           | 1.000    |
| 62     | SX5409570 | PRISE DE PRESSION FF (5409570)                | 1.000    |
| 621    | SX5663120 | TUBE REMPLISSAGE /CHAUFFAGE (5663120)         | 1.000    |
| 622    | SX5622860 | TUBE BALLON/DISCONNECTEUR                     | 1.000    |
| 627    | SX8611750 | CONFIGURATEUR 1.24 et DUO                     | 1.000    |
| 63     | SX8422570 | ELECTRODE ALLUMAGE (x4) (8422570)             | 1.000    |
| 671    | SX5646780 | ROBINET DE VIDANGE (5646780)                  | 1.000    |
| 672    | SX5663070 | TUBE SORTIE SERP./RAC./PRES. (5663070)        | 1.000    |
| 68     | SX0618970 | CACHE INFERIEUR CHAMBRE COMBUSTION (0618970)  | 1.000    |
| 68     | SX5110440 | CACHE INFERIEUR CHAMBRE COMBUSTION (5110440)  | 1.000    |
| 686    | SX5663020 | CLAPET ANTI-RETOUR (5663020)                  | 1.000    |
| 7      | SX5107950 | TRAVERSE SUPERIEURE AVANT (5107950)           | 1.000    |
| 70     | SX5662800 | TUBE POMPE/ECHANGEUR (5662800)                | 1.000    |
| 72     | SX5655200 | POMPE GRUNDFOS 15/50 (5655200)                | 1.000    |
| 73     | SX0607290 | DEGAZEUR (607290)                             | 1.000    |
| 76     | SX5662920 | SERPENTIN EN INOX/ANODE (5662920)             | 1.000    |
| 78     | SX5662900 | BALLON (5662900)                              | 1.000    |
| 78     | SX5688340 | BALLON (5688340)                              | 1.000    |
| 79     | SX9950610 | SOUPAPE DE SECURITE 7BARS                     | 1.000    |
| 8      | SX5402270 | TUBE SILICONE PRESSOSTAT (x3) (5402270)       | 1.000    |
| 80     | SX5212070 | RACCORD ENTREE SANITAIRE (5212070)            | 1.000    |
| 83     | SX5620090 | LIMITEUR DEBIT SANIT.12L/MN                   | 1.000    |

| Repère | Référence | Désignation                         | Quantité |
|--------|-----------|-------------------------------------|----------|
| 90     | SX5622840 | ROBINET DE REMPLISSAGE (5622840)    | 1.000    |
| 91     | SX9951120 | ROBINET DE REMPLISSAGE (9951120)    | 1.000    |
| 95     | SX5209940 | ANODE DE MAGNESIUM (5209940)        | 1.000    |
| 96     | SX5663060 | TUBE V3V/ENTREE SERPENTIN (5663060) | 1.000    |
| 98     | SX5212040 | TUBE BY-PASS CHAUFFAGE (5212040)    | 1.000    |
| 999    | SX8414620 | CABLE M1 ALIM ELEC (8414620)        | 1.000    |
| 999    | SX8419850 | CABLE A2 VENTILLATEUR-PRESSOSTAT    | 1.000    |
| 999    | SX8419840 | CABLE A8 V3V                        | 1.000    |
| 999    | SX8419130 | CABLE A4 POMPE-COMMUTATEUR          | 1.000    |
| 999    | SX8418950 | CABLE M1 INTERUPTEUR (8418950)      | 1.000    |
| 999    | SX8418860 | CONNECTEUR PONT TIMER (8418860)     | 1.000    |
| 999    | SX8419280 | CABLE PROGRAMMATEUR SANITAIRE       | 1.000    |