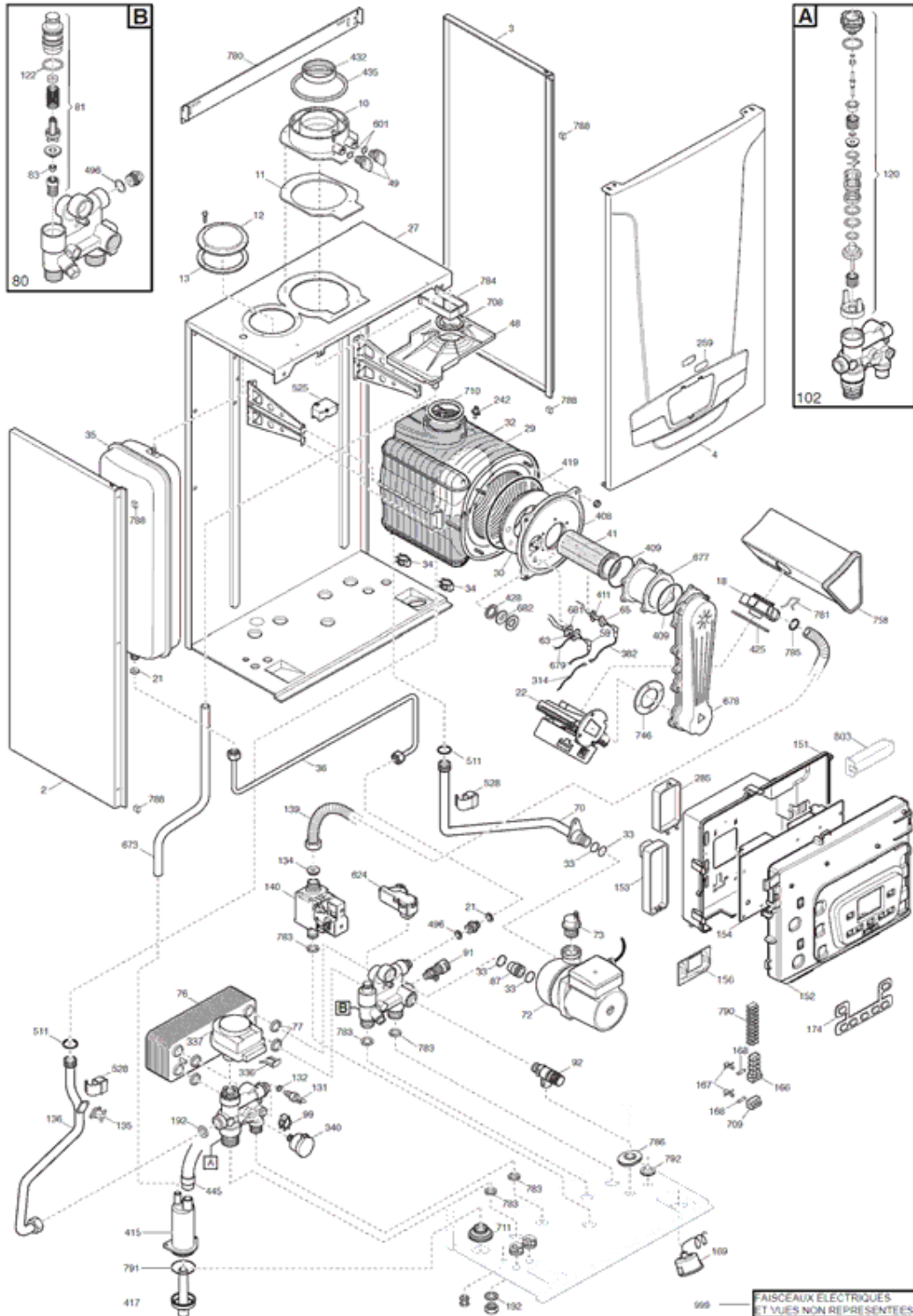




INITIA PLUS HTE

A PARTIR DE JUIN 2012

|    |             |                      |
|----|-------------|----------------------|
| N° | 710836401/2 | INITIA PLUS 2.24 HTE |
|----|-------------|----------------------|



## INITIA PLUS 2.24 HTE - 710836401/2

| Repère | Référence   | Désignation                              | Quantité |
|--------|-------------|--|----------|
| 10     | SX5409020   | RACCORDEMENT VENTOUSE (5409020)          | 1.000    |
| 102    | SX5696200   | ENS.VANNE 3 VOIES                        | 1.000    |
| 11     | SX5409010   | JOINT VENTOUSE CAOUTCHOUC (5409010)      | 1.000    |
| 12     | SX5108690   | OBTURATEUR (5108690)                     | 1.000    |
| 120    | SX0627880   | BOUCHON AVANT+PISTON V3V                 | 1.000    |
| 122    | SX5405370   | O-RING "FILTRE SANITAIRE" (x3) (5405370) | 1.000    |
| 13     | SX5407400   | JOINT OBTURATEUR DECOUPE (x3)            | 1.000    |
| 131    | SX8435400   | SONDE CTN (8435400)                      | 1.000    |
| 132    | SX5402830   | JOINT SONDE SANITAIRE (X10) (PDM5402830) | 1.000    |
| 134    | SX710011500 | DIAPHRAGME GAZ D5,6                      | 1.000    |
| 134    | SX710909501 | KIT PROPANE INITIA PLUS                  | 1.000    |
| 135    | SX9950760   | SECURITE SURCHAUFFE 105° (9950760)       | 1.000    |
| 136    | SX710157700 | TUBE DEPART CHAUFFAGE                    | 1.000    |
| 139    | SX710022000 | FLEXIBLE GAZ                             | 1.000    |
| 140    | SX710023400 | VANNE GAZ VGU86S                         | 1.000    |
| 151    | SX710018500 | COUVERCLE BOITIER ELECTRIQUE             | 1.000    |
| 152    | SX710036800 | PANNEAU AV.TABLEAU DE BORD               | 1.000    |
| 153    | SX710018200 | CAPOT BORNIER DE RACCORDEMENT            | 1.000    |
| 154    | SX711019900 | CIRCUIT LMS 14 COMBI                     | 1.000    |
| 156    | SX711250700 | CI AFFICHEUR AVS 77 V3.7                 | 1.000    |
| 166    | SX8421590   | BORNIER DE RACCORDEMENT (PDM8421590)     | 1.000    |
| 167    | SX5405340   | PORTE-FUSIBLES (x3) (PDM5405340)         | 1.000    |
| 168    | SX9950580   | FUSIBLES 2A 250V (X10) (9950580)         | 1.000    |
| 169    | SX710554900 | MANOMETRE                                | 1.000    |
| 174    | SX710100400 | CLAVIER DIPLAY 7 TOUCHES                 | 1.000    |
| 18     | SX710078400 | VENTURI AGU3721                          | 1.000    |
| 192    | SX5404650   | JOINT G3/4" 17x24x2 (X10) #              | 1.000    |
| 2      | SX710066300 | PANNEAU GAUCHE INITIA PLUS               | 1.000    |
| 21     | SX5402050   | JOINT 6,1x11,5x1,5 (X3)                  | 1.000    |
| 22     | SX710692300 | VENTILATEUR NRG118                       | 1.000    |
| 242    | SX8435270   | SONDE CTN FUMEE                          | 1.000    |
| 259    | SX710828200 | PLAQUE LOGO IDEAL STANDARD               | 1.000    |
| 27     | SX710305400 | C FRAME STD FUGAS VGU                    | 1.000    |
| 285    | SX710083600 | CAPOT CLIP-IN                            | 1.000    |
| 29     | SX710283700 | PANNEAU ISOLANT ARRIERE                  | 1.000    |
| 3      | SX710066200 | PANNEAU DROIT INITIA PLUS                | 1.000    |
| 30     | SX5411020   | PANNEAU ISOLANT (5411020)                | 1.000    |
| 314    | SX710071600 | CABLE RALLONGE IONISATION                | 1.000    |
| 32     | SX5671940   | ECHANGEUR PRINCIPAL 4E (5671940)         | 1.000    |
| 33     | SX5403130   | O-RING 22X3 EPDM (x3) (5403130)          | 1.000    |
| 336    | SX8380680   | RESSORT FIX MOTEUR V3V                   | 1.000    |
| 337    | SX5694580   | MOTEUR V3V ELBI                          | 1.000    |
| 34     | SX8380860   | CLIPS ECHANGEUR PRINCIPAL                | 1.000    |
| 340    | SX710109100 | CAPTEUR DE PRESSION                      | 1.000    |
| 35     | SX710022500 | VASE D'EXPANSION 8L                      | 1.000    |
| 36     | SX710157400 | TUBE LIAISON VASE                        | 1.000    |
| 382    | SX8511130   | CABLE ELECTRODE IONISATION               | 1.000    |
| 4      | SX710831900 | PANNEAU AVANT INITIA PLUS IS             | 1.000    |

## INITIA PLUS 2.24 HTE - 710836401/2

| Repère | Référence   | Désignation                                | Quantité |
|--------|-------------|--|----------|
| 408    | SX5212900   | BRIDE CHAMBRE DE COMBUSTION                | 1.000    |
| 409    | SX5413530   | JOINT DE BRULEUR                           | 1.000    |
| 41     | SX710083500 | BRULEUR 4E B.2356.001 INITIA PLUS          | 1.000    |
| 411    | SX710185200 | JOINT ELECTRODE IONISATION                 | 1.000    |
| 415    | SX710016700 | SIPHON COMPLET                             | 1.000    |
| 417    | SX710522300 | BOUCHON SYPHON CONDENSATS                  | 1.000    |
| 419    | SX5411000   | JOINT BRIDE/ECHANGEUR                      | 1.000    |
| 425    | SX710042400 | JOINT DE VENTURI                           | 1.000    |
| 428    | SX5409290   | JOINT HUBLLOT (X3) (5409290)               | 1.000    |
| 432    | SX5410420   | JOINT FUMEEES Ø60                          | 1.000    |
| 435    | SX5407550   | JOINT FUMEEES Ø100 (5407550)               | 1.000    |
| 445    | SX710066100 | FLEXIBLE DE LIAISON SIPHON                 | 1.000    |
| 48     | SX710282300 | GOUTIERE AIR NEUF                          | 1.000    |
| 49     | SX5409280   | BOUCHON RACCORD.VENTOUSE (5409280)         | 1.000    |
| 496    | SX0400020   | O-RING 2062 (x3) (400020)                  | 1.000    |
| 511    | SX5404600   | O-RING 17,86X2,62 (X3)                     | 1.000    |
| 525    | SX8435260   | ALLUMEUR ANSTOS ZAG 2XV01 (8435260)        | 1.000    |
| 528    | SX710439300 | SONDE CTN TODS                             | 1.000    |
| 59     | SX8513520   | CABLE ELECT.D'ALLUMAGE L=250               | 1.000    |
| 601    | SX5408560   | O-RING 8,73X1,78 (x3) (5408560)            | 1.000    |
| 624    | SX8435380   | CAPTEUR DE DEBIT (8435380)                 | 1.000    |
| 63     | SX710220000 | ELECTRODE ALLUMAGE HTE                     | 1.000    |
| 65     | SX710220700 | ELECTRODE IONISATION HTE                   | 1.000    |
| 673    | SX710066000 | TUBE GOUTIERE /SIPHON                      | 1.000    |
| 677    | SX5212930   | RALLONGE BRULEUR 5E (5212930)              | 1.000    |
| 678    | SX710051400 | AIR-GAS CONVEYOR SS.LUNA4                  | 1.000    |
| 679    | SX8511150   | CABLE MASSE ELECTR.D'ALL.L=270(8511150)    | 1.000    |
| 681    | SX710185300 | JOINT ELECTRODE D'ALLUMAGE                 | 1.000    |
| 682    | SX5211800   | HUBLLOT (5211800)                          | 1.000    |
| 70     | SX710156800 | TUBE POMPE/ECHANGEUR                       | 1.000    |
| 708    | SX5410970   | JOINT D:60 (5410970)                       | 1.000    |
| 709    | SX8423160   | DOMINOS PORTE FUSIBLE(8423160)             | 1.000    |
| 710    | SX5411030   | JOINT D:80 (5411030)                       | 1.000    |
| 711    | SX710039600 | JOINT EPDM SIPHON/CAISSON                  | 1.000    |
| 72     | SX710158800 | POMPE UPRO 15-60 L4 2S GRUNDFOS            | 1.000    |
| 73     | SX710493600 | DEGAZEUR POMPE                             | 1.000    |
| 746    | SX5410900   | JOINT VENTURI (5410900)                    | 1.000    |
| 758    | SX710051700 | BOITE A AIR                                | 1.000    |
| 76     | SX5686680   | ECHANGEUR SANITAIRE 14 PLAQUES             | 1.000    |
| 77     | SX5404520   | JOINT ECHANGEUR SANITAIRE(x4) (PDM5404520) | 1.000    |
| 780    | SX710014800 | TRAVERSE FIXATION SUPERIEURE               | 1.000    |
| 781    | SX710011400 | CLIP FIXATION FLEXIBLE GAZ                 | 1.000    |
| 783    | SX710039500 | JOINT GROUPE HYDRAULIQUE                   | 1.000    |
| 784    | SX710123900 | SUPPORT REDUCTION AIR NEUF                 | 1.000    |
| 785    | SX710061400 | O-RING 18x3 EPDM                           | 1.000    |
| 786    | SX710387100 | JOINT EPDM SOUP./CAISSON                   | 1.000    |
| 788    | SX710176000 | JOINT CHAMBRE DE COMBUSTION                | 1.000    |
| 790    | SX710117900 | BORNIER M2                                 | 1.000    |

## INITIA PLUS 2.24 HTE - 710836401/2

| Repère | Référence   | Désignation                         | Quantité |
|--------|-------------|-------------------------------------|----------|
| 791    | SX5411840   | O-RING 40,95x2,62-EPDM              | 1.000    |
| 792    | SX710189600 | BOUCHON EPDM NOIR                   | 1.000    |
| 80     | SX710421500 | GROUPE ENTREE SANIT/RETOUR CHAUFF   | 1.000    |
| 80     | SX711133900 | GR. ENT SANIT.8L/RET CHAUFF         | 1.000    |
| 803    | SX710097200 | SUPPORT PANNEAU DE COMMANDE         | 1.000    |
| 81     | SX0621090   | GROUPE FILTRE LIMITEUR 8L           | 1.000    |
| 81     | SX0630550   | GROUPE FILTRE 12L                   | 1.000    |
| 83     | SX5666130   | LIMITEUR DEBIT SANIT.12L/MN         | 1.000    |
| 83     | SX5666110   | LIMITEUR DEBIT SANIT.8L/MN          | 1.000    |
| 87     | SX710185800 | ELEMENT DE CONNEXION DE POMPE       | 1.000    |
| 91     | SX5652030   | ROBINET DE VIDANGE (PDM5652030)     | 1.000    |
| 92     | SX9951170   | SOUPAPE DE SECURITE 3BARS (9951170) | 1.000    |
| 99     | SX8380850   | CLIP TUBE BY-PASS                   | 1.000    |
| 999    | SX8414620   | CABLE M1 ALIM ELEC (8414620)        | 1.000    |
| 999    | SX8414540   | CABLE M1/TA (8414540)               | 1.000    |
| 999    | SX710057600 | CABLE X10/BORNIER M1                | 1.000    |
| 999    | SX710038600 | CABLE X41/AFFICHEUR                 | 1.000    |
| 999    | SX710355800 | CABLE X11-13/VENT-POMP-V3V          | 1.000    |
| 999    | SX710103100 | CABLE MASSE                         | 1.000    |
| 999    | SX710062100 | CABLE X14/VG-ALLUMEUR               | 1.000    |
| 999    | SX710062300 | CABLE X23 VENT                      | 1.000    |
| 999    | SX710062700 | CABLE X21/M2-SONDE BALLON-EXT       | 1.000    |
| 999    | SX710062800 | CABLE X42/M2-SONDE QAA              | 1.000    |
| 999    | SX710079700 | CABLE X20/M2 SONDAS AUX             | 1.000    |
| 999    | SX710071700 | CABLE RALLONGE CTN FUMEE            | 1.000    |
| 999    | SX710066500 | CABLE X12/M1-TA                     | 1.000    |
| 999    | SX710514400 | CABLE X22/CTN                       | 1.000    |