



ZENIS 3 DUO 3.28 FF

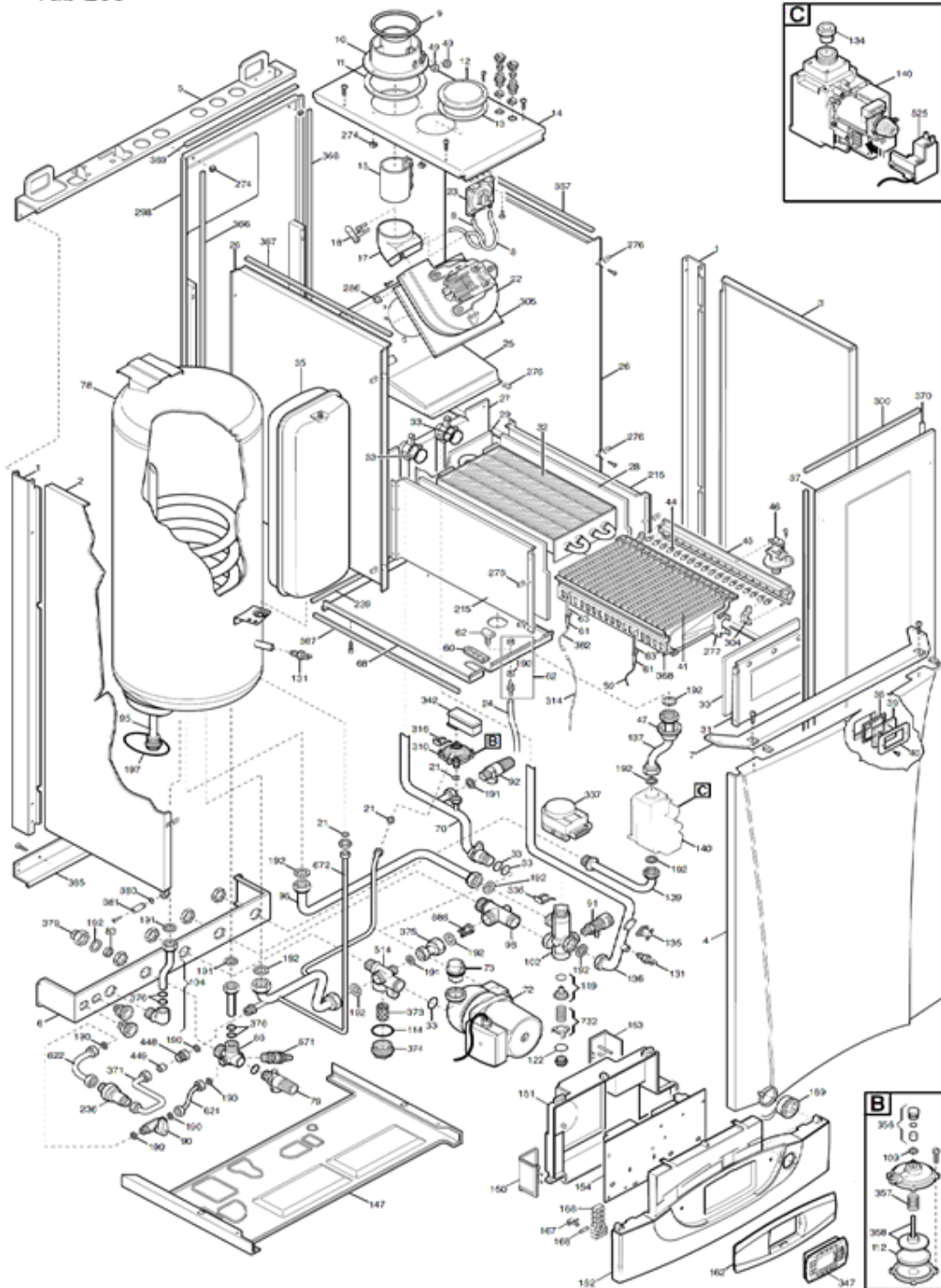
N° 1728

CPN457283580/1

ZENIS 3 DUO 3.28 FF

Tab 253

Tab 253



ZENIS 3 DUO 3.28 FF - CPN457283580/1

Repère	Référence	Désignation	Quantité
1	SX5116480	MONTANT LATERAL (5116480)	1.000
10	SX5207060	RACCORDLEMENT VENTOUSE (5207060)	1.000
102	SX5663040	ENS.VANNE 3 VOIES (5663040)	1.000
104	SX5683630	CONNEXION DEPART ECS	1.000
109	SX5207810	JOINT (x3) (5207810)	1.000
11	SX5407890	JOINT VENTOUSE CAOUTCHOUC (5407890)	1.000
112	SX5405320	MEMBRANE SECURITE DEBIT D'EAU (x3) (PDM5405320)	1.000
114	SX5403820	JOINT O-RING (x3) (5403820)	1.000
119	SX0605760	CLAPET CHAUFFAGE V3V (605760)	1.000
12	SX5108690	OBTURATEUR (5108690)	1.000
122	SX5405370	O-RING "FILTRE SANITAIRE" (x3) (5405370)	1.000
13	SX5407400	JOINT OBTURATEUR DECOUPE (x3)	1.000
131	SX8434820	SONDE CTN CH et SN MURALE (8434820)	1.000
134	SX5211240	DIAPHRAGME GAZ 4,8mm (5211240)	1.000
135	SX9950760	SECURITE SURCHAUFFE 105° (9950760)	1.000
136	SX5662790	TUBE V3V/ECHANGEUR (5662790)	1.000
137	SX5663200	TUBE GAZ (5663200)	1.000
139	SX5662880	TUBE ENTREE GAZ (5662880)	1.000
14	SX5658850	PANNEAU SUPERIEUR DE CAISSON (5658850)	1.000
140	SX5658830	VANNE GAZ SIT(845 SIGMA)	1.000
147	SX5116500	PANNEAU INFERIEUR JAQUETTE (5116500)	1.000
15	SX5645800	JOINT SORTIE EXTRACTEUR (5645800)	1.000
150	SX5412180	COUVERCLE (5412180)	1.000
151	SX5412250	COUVERCLE BOITE ELECTRIQUE (5412250)	1.000
152	SX5413280	PANNEAU DE COMMANDE LUNA3 DUO	1.000
153	SX5407660	COUVERCLE BRANCHE.ELECTRIQUE (5407660)	1.000
154	SX5687020	CIRCUIT IMPRIME BetP SERIE 3 (5687020)	1.000
162	SX5413290	PLASTRON SERIGRAPHIE LUNA3 DUO	1.000
166	SX8421590	BORNIER DE RACCORDLEMENT (PDM8421590)	1.000
167	SX5405340	PORTE-FUSIBLES (x3) (PDM5405340)	1.000
168	SX9950580	FUSIBLES 2A 250V (X10) (9950580)	1.000
169	SX9951020	MANOMETRE AVEC SUPPORT (9951020)	1.000
169	SX9951830	MANOMETRE AVEC SUPPORT (9951830)	1.000
17	SX0600490	COUDE EVACUATION FUMEEES	1.000
18	SX5407050	VENTURI (5407050)	1.000
190	SX5404970	JOINT 3/8" (x10) (PDM5404970)	1.000
191	SX5408970	JOINT G1/2" (5408970)	1.000
192	SX5404650	JOINT G3/4" 17x24x2 (X10) #	1.000
197	SX5412820	JOINT OR 44,17x1,78 (X3) (5412820)	1.000
2	SX5684630	PANNEAU COTE GAUCHE	1.000
21	SX5402050	JOINT 6,1x11,5x1,5 (X3)	1.000
215	SX5106570	COTE CHAMBRE DE COMBUSTION FF (5106570)	1.000
22	SX5632530	EXTRACTEUR (SEL) (5632530)	1.000
23	SX0618470	PRESSOSTAT 1,2MB HONEYWELL	1.000
236	SX5625310	DISCONNECTEUR CALEFFI DUO (PDM5625310)	1.000
239	SX5404380	JOINT L=250 (5404380)	1.000
24	SX5402490	TUBE SILICONE "VANNE GAZ" (x3) (5402490)	1.000
25	SX5634580	HOTTE EVACUATION FUMEEES (5634580)	1.000

ZENIS 3 DUO 3.28 FF - CPN457283580/1

Repère	Référence	Désignation	Quantité
26	SX5107440	PANNEAU COTE CHAMBRE ETANCHE (5107440)	1.000
27	SX5106560	PANNEAU ARRIERE CHAMBRE ETANCHE (5106560)	1.000
274	SX9950870	ECROU M4 (5674300)	1.000
276	SX1340440	CLIP (1340440)	1.000
277	SX5630300	SUPPORT BRULEUR (5630300)	1.000
28	SX5213170	PANNEAU ISOLANT LATERAL (5213170)	1.000
286	SX8240530	ECROU (8240530)	1.000
29	SX5213250	PANNEAU ISOLANT ARRIERE (5213250)	1.000
298	SX5621510	PANNEAU ARRIERE CHAMBRE ETANCHE (5621510)	1.000
3	SX5684690	PANNEAU COTE DROIT (5684690)	1.000
30	SX5213410	PANNEAU ISOLANT AVANT (5213410)	1.000
300	SX5404420	JOINT L=235mm (5404420)	1.000
304	SX5208400	SUPPORT NOURRICE (5208400)	1.000
305	SX5107430	PLAQUE EXTRACTEUR (5107430)	1.000
31	SX5108420	PANNEAU AVANT CHAMBRE COMBUSTION (5108420)	1.000
310	SX5641850	PRESSOSTAT POMPE (5641850)	1.000
314	SX8419750	CABLE ELECTRODES D'IONISATION (8419750)	1.000
316	SX8380610	RESSORT FIX.MICRO (8380610)	1.000
32	SX5646410	ECHANGEUR PRINCIPAL (5646410)	1.000
33	SX5403130	O-RING 22X3 EPDM (x3) (5403130)	1.000
336	SX8380680	RESSORT FIX MOTEUR V3V	1.000
337	SX5647340	MOTEUR V3V ELBI	1.000
342	SX5641800	MICRO-INTERRUPTEUR V3V	1.000
347	S71410801	INTERFACE IDEAL STANDARD (C71410801)	1.000
35	SX5629130	VASE D'EXPANSION 7,5L	1.000
356	SX5634820	BOUCHON AVANT (GROUPE) (5634820)	1.000
357	SX8380600	RESSORT SECURITE DEBIT D'EAU (8380600)	1.000
358	SX5634830	BOUCHON PRESSOSTAT (5634830)	1.000
365	SX5106530	TRAVERSE ARRIERE INFERIEURE	1.000
366	SX5404370	JOINT L=665 (5404370)	1.000
367	SX5404390	JOINT L=430 (5404390)	1.000
368	SX5106600	SUPPORT BRULEUR	1.000
369	SX5404400	JOINT L=205 (5404390)	1.000
37	SX5621590	PANNEAU AVANT CHAMBRE ETANCHE (5621590)	1.000
370	SX5404410	JOINT L=655 (5404410)	1.000
371	SX5663240	TUBE DISCONNECTEUR /CIRCUIT CHAUFFAGE	1.000
373	SX5109080	FILTRE CHAUFFAGE (PDM5109080)	1.000
374	SX5212030	BOUCHON PORTE FILTRE M30	1.000
375	SX5663030	TUBE BY-PASS (5663030)	1.000
376	SX5400650	JOINT 13,94x2,62 (5400650)	1.000
379	SX5206120	REDUCTION FM G 3/4-1/2 (5206120)	1.000
38	SX5401610	JOINT HUBLLOT (x3) (5401610)	1.000
380	SX5400620	JOINT 4,47x1,78 (5400620)	1.000
381	SX5209830	PIVOT PANNEAU COMMANDE (5209830)	1.000
382	SX8416860	CABLE ELECTRODES D'IONISATION (8416860)	1.000
39	SX5203930	HUBLLOT (5203930)	1.000
4	SX5116470	PANNEAU AVANT DUO (5116470)	1.000
40	SX5103360	COUVERCLE HUBLLOT (5103360)	1.000

ZENIS 3 DUO 3.28 FF - CPN457283580/1

Repère	Référence	Désignation	Quantité
41	SX5630310	BRULEUR 18 BECS (5630310)	1.000
43	SX5633950	NOURRICE PTE INJECTEUR 18T D:1,18 (5633950)	1.000
44	SX5666900	KIT INJECTEURS D.1,18 GN	1.000
44	SX5666910	KIT INJECTEURS D.0,69 BP	1.000
448	SX5209230	PORTE CLAPET ANTIRETOUR	1.000
449	SX5640030	CLAPET ANTI RETOUR (5640030)	1.000
46	SX0607990	RACCORD NOURRICE (607990)	1.000
47	SX5404740	JOINT NOURRICE/CAISSON (x3) (5404740)	1.000
49	SX5207070	BOUCHON RACCORDEMENT VENTOUSE (5207070)	1.000
5	SX5109740	TRAVERSE SUPERIEURE ARRIERE (5109740)	1.000
514	SX5663010	RACCORD R.C/POMPE/FILTRE (5663010)	1.000
525	SX8419570	ALLUMEUR VG SIT	1.000
59	SX8419380	CABLE ELECTRODE ALLUMAGE L=400 (x2) (8419380)	1.000
6	SX5106550	TRAVERSE PLATINE HYDRAULIQUE (5106550)	1.000
60	SX5408280	JOINT CABLE ELECTRODES (5408280)	1.000
61	SX5404920	PROTECTION ELECTRODE (x4) (5404920)	1.000
62	SX5409570	PRISE DE PRESSION FF (5409570)	1.000
621	SX5663120	TUBE REMPLISSAGE /CHAUFFAGE (5663120)	1.000
622	SX5622860	TUBE BALLON/DISCONNECTEUR	1.000
63	SX8422570	ELECTRODE ALLUMAGE (x4) (8422570)	1.000
671	SX5646780	ROBINET DE VIDANGE (5646780)	1.000
672	SX5663070	TUBE SORTIE SERP./RAC./PRES. (5663070)	1.000
68	SX0618970	CACHE INFERIEUR CHAMBRE COMBUSTION (0618970)	1.000
686	SX5663020	CLAPET ANTI-RETOUR (5663020)	1.000
7	SX5107950	TRAVERSE SUPERIEURE AVANT (5107950)	1.000
70	SX5662800	TUBE POMPE/ECHANGEUR (5662800)	1.000
72	SX5687510	POMPE UP 15-60 AO AV.CONN.3V (5687510)	1.000
73	SX0607290	DEGAZEUR (607290)	1.000
732	SX0620210	RESSORT (0620210)	1.000
78	SX5688340	BALLON (5688340)	1.000
79	SX9950610	SOUPAPE DE SECURITE 7BARS	1.000
8	SX5402270	TUBE SILICONE PRESSOSTAT (x3) (5402270)	1.000
80	SX5212070	RACCORD ENTREE SANITAIRE (5212070)	1.000
83	SX5620090	LIMITEUR DEBIT SANIT.12L/MN	1.000
9	SX3105470	DIAPHRAGME D:76	1.000
90	SX5622840	ROBINET DE REMPLISSAGE (5622840)	1.000
91	SX5652030	ROBINET DE VIDANGE (PDM5652030)	1.000
92	SX9950600	SOUPAPE DE SECURITE 3BARS	1.000
95	SX5679910	ANODE MAGNESIUM /BALL.3.33HTE (5679910)	1.000
96	SX5663060	TUBE V3V/ENTREE SERPENTIN (5663060)	1.000
98	SX5212040	TUBE BY-PASS CHAUFFAGE (5212040)	1.000
999	SX8414620	CABLE M1 ALIM ELEC (8414620)	1.000
999	SX8512770	CABLE M2/RCM MALE	1.000
999	SX8512310	CABLE CN10/M1-ALIM (8512310)	1.000
999	SX8512820	CABLE CN1/POMP-V3V-VENT 8512820)	1.000
999	SX8512380	CABLE CN7/M2-RCM	1.000
999	SX8512670	CABLE CN2-11/BASSE TENSION FF	1.000
999	SX8512780	CABLE M2/RCM FEMELLE	1.000

ZENIS 3 DUO 3.28 FF - CPN457283580/1

Repère	Référence	Désignation	Quantité
999	SX8512730	CABLE MASSE	1.000