

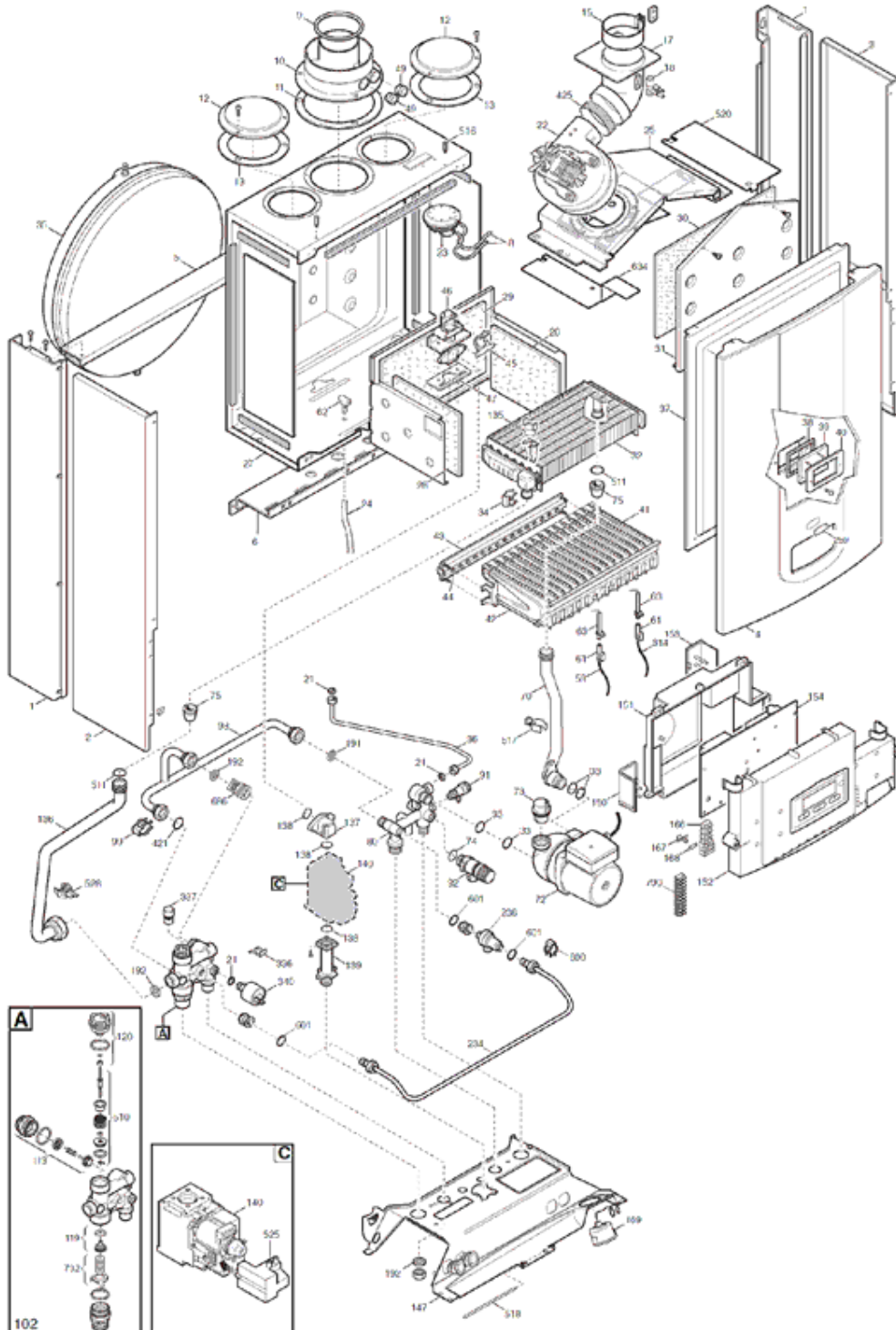


ZENIS ST PRIME FF

A PARTIR DE JANVIER 2012

| | | | |
|----|--------------|------------------------|--|
| N° | CPD455243220 | ZENIS ST PRIME 1.24 FF | |
|----|--------------|------------------------|--|

Tab 452



ZENIS ST PRIME 1.24 FF_CPD455243220_Vue.xls

ZENIS ST PRIME 1.24 FF - CPD455243220

| Repère | Référence | Désignation | Quantité |
|--------|-------------|---|----------|
| 1 | SX5683090 | MONTANT LATERAL (5683090) | 1.000 |
| 10 | SX5207060 | RACCORDEMENT VENTOUSE (5207060) | 1.000 |
| 102 | SX5696040 | ENS.VANNE 3 VOIES | 1.000 |
| 11 | SX5407890 | JOINT VENTOUSE CAOUTCHOUC (5407890) | 1.000 |
| 113 | SX0617100 | GROUPE BY-PASS | 1.000 |
| 119 | SX0605760 | CLAPET CHAUFFAGE V3V (605760) | 1.000 |
| 12 | SX5108690 | OBTURATEUR (5108690) | 1.000 |
| 120 | SX0600750 | BOUCHON V3V CHAUFFAGE | 1.000 |
| 13 | SX5407400 | JOINT OBTURATEUR DECOUPE (x3) | 1.000 |
| 134 | SX5211170 | DIAPHRAGME GAZ 4,7mm (5211170) | 1.000 |
| 135 | SX9951610 | SECURITE DE CHAUFFAGE 105° (9951610) | 1.000 |
| 136 | SX5681010 | TUBE DEPART CHAUF/ECHANGEUR (5681010) | 1.000 |
| 137 | SX0610080 | TUBE GAZ (610080) | 1.000 |
| 138 | SX5402010 | JOINT O-RING (x3) (PDM5402010) | 1.000 |
| 139 | SX5210630 | RACCORD ENTREE GAZ ((5210630) | 1.000 |
| 140 | SX5653610 | VANNE GAZ SIT (845 SIGMA) | 1.000 |
| 147 | SX5683010 | TRAVERSE LUNA 3 (5683010) | 1.000 |
| 15 | SX0600530 | COLLIER SORTIE EXTRACTEUR (0600530) | 1.000 |
| 150 | SX5412180 | COUVERCLE (5412180) | 1.000 |
| 151 | SX5412250 | COUVERCLE BOITE ELECTRIQUE (5412250) | 1.000 |
| 153 | SX5407660 | COUVERCLE BRANCHE.ELECTRIQUE (5407660) | 1.000 |
| 154 | SX5687010 | CIRCUIT IMPRIME BetP SERIE 3 (5687010) | 1.000 |
| 166 | SX8421590 | BORNIER DE RACCORDEMENT (PDM8421590) | 1.000 |
| 167 | SX5405340 | PORTE-FUSIBLES (x3) (PDM5405340) | 1.000 |
| 168 | SX9950580 | FUSIBLES 2A 250V (X10) (9950580) | 1.000 |
| 169 | SX9951650 | MANOMETRE AVEC SUPPORT (9951650) | 1.000 |
| 17 | SX5213750 | COUDE EVACUATION FUMEEES (5213750) | 1.000 |
| 18 | SX5407050 | VENTURI (5407050) | 1.000 |
| 191 | SX5408970 | JOINT G1/2" (5408970) | 1.000 |
| 192 | SX5404650 | JOINT G3/4" 17x24x2 (X10) # | 1.000 |
| 2 | SX5681390 | PANNEAU COTE GAUCHE | 1.000 |
| 21 | SX5402050 | JOINT 6,1x11,5x1,5 (X3) | 1.000 |
| 22 | SX5653850 | EXTRACTEUR 1V MVL RLG108 (5653850) | 1.000 |
| 23 | SX0628640 | PRESSOSTAT 1,2MB | 1.000 |
| 234 | SX710755500 | TUBE DISCONNECTEUR | 1.000 |
| 24 | SX5414320 | TUBE PRISE DE COMPENSAT.L=170 | 1.000 |
| 25 | SX5681090 | HOTTE EVACUATION DES FUMEEES (5681090) | 1.000 |
| 27 | SX5681180 | CHAMBRE ETANCHE (5681180) | 1.000 |
| 28 | SX5213190 | PANNEAU ISOLANT LATERAL(5213190) | 1.000 |
| 29 | SX5213290 | PANNEAU ISOLANT ARRIERE 32KW (5213290) | 1.000 |
| 3 | SX5681380 | PANNEAU COTE DROIT | 1.000 |
| 30 | SX5213340 | PANNEAU ISOLANT AVANT (5213340) | 1.000 |
| 31 | SX5111840 | PANNEAU AVANT CHAMBRE COMBUSTION (5111840) | 1.000 |
| 314 | SX8418870 | CABLE ELECTRODE D'IONISATION (x2) (8418870) | 1.000 |
| 32 | SX0620860 | ECHANGEUR H2O/GAZ | 1.000 |
| 32 | SX5681190 | ECHANGEUR H2O/GAS (5681190) | 1.000 |
| 33 | SX5403130 | O-RING 22X3 EPDM (x3) (5403130) | 1.000 |
| 336 | SX8380680 | RESSORT FIX MOTEUR V3V | 1.000 |

ZENIS ST PRIME 1.24 FF - CPD455243220

| Repère | Référence | Désignation | Quantité |
|--------|-------------|---|----------|
| 337 | SX5694580 | MOTEUR V3V ELBI | 1.000 |
| 34 | SX5113650 | CLIPS ECHANGEUR PRINCIPAL | 1.000 |
| 340 | SX9951690 | PRESSOSTAT CHAUFFAGE (9951690) | 1.000 |
| 35 | SX5625560 | VASE D'EXPANSION 8L(PDM5625560) | 1.000 |
| 36 | SX5653290 | TUBE VASE D'EXPANSION (5653290) | 1.000 |
| 37 | SX5653710 | PANNEAU AVANT CHAMBRE ETANCHE (5653710) | 1.000 |
| 38 | SX5401610 | JOINT HUBLLOT (x3) (5401610) | 1.000 |
| 39 | SX5203930 | HUBLLOT (5203930) | 1.000 |
| 4 | SX710878800 | PANNEAU AVANT ZENIS ST | 1.000 |
| 40 | SX5103360 | COUVERCLE HUBLLOT (5103360) | 1.000 |
| 41 | SX5653300 | BRULEUR 15 BECS (5653300) | 1.000 |
| 42 | SX5604090 | ELEMENT BRULEUR (5604090) | 1.000 |
| 421 | SX5408270 | O-RING 11,91x2,62 EPDMR | 1.000 |
| 425 | SX5412270 | JOINT DE VENTURI (5412270) | 1.000 |
| 43 | SX0606140 | NOURRICE PORTE-INJECTEUR 15T.D.1,18 (606140) | 1.000 |
| 44 | SX0608440 | KIT INJECTEURS D.1,18 GN (608440) | 1.000 |
| 44 | SX0601520 | KIT INJECTEURS D.0,74 BP (601520) | 1.000 |
| 44 | SX5688320 | KIT INJECTEURS D.0,74 BP (5688320) | 1.000 |
| 45 | SX5407940 | JOINT NOURRICE (x3) (5407940) | 1.000 |
| 46 | SX5657180 | RACCORD NOURRICE (5657180) | 1.000 |
| 47 | SX5407810 | JOINT NOURRICE/CAISSON (5407810) | 1.000 |
| 49 | SX5207070 | BOUCHON RACCORDEMENT VENTOUSE (5207070) | 1.000 |
| 5 | SX5110290 | TRAVERSE ARRIERE SUPERIEURE (5110290) | 1.000 |
| 510 | SX0600760 | ENS.OBTURATEUR SANITAIRE (600760) | 1.000 |
| 511 | SX5404600 | O-RING 17,86X2,62 (X3) | 1.000 |
| 516 | SX5210670 | PISTON (5210670) | 1.000 |
| 517 | SX5407840 | CLIP FIXATION TUBE (5407840) | 1.000 |
| 518 | SX5112040 | CHEVILLE PANNEAU COMMANDE (5112040) | 1.000 |
| 520 | SX5112050 | VOLET (5112050) | 1.000 |
| 525 | SX8419060 | ALLUMEUR NAC-SIT (8419060) | 1.000 |
| 528 | SX8435360 | SONDE ITS (8435360) | 1.000 |
| 59 | SX8419050 | CABLE ELECTRODE D'ALLUMAGE (x2) (8419050) | 1.000 |
| 6 | SX5109640 | TRAVERSE ARRIERE INFERIEURE (5109640) | 1.000 |
| 600 | SX5112530 | RESSORT FIXATION DISCONNECTEUR (5112530) | 1.000 |
| 61 | SX5407830 | PROTECTION ELECTRODE (x3) (5407830) | 1.000 |
| 62 | SX5409570 | PRISE DE PRESSION FF (5409570) | 1.000 |
| 63 | SX8422570 | ELECTRODE ALLUMAGE (x4) (8422570) | 1.000 |
| 634 | SX5115960 | VOLET ANTIREFOULEUR GAUCHE | 1.000 |
| 686 | SX5663020 | CLAPET ANTI-RETOUR (5663020) | 1.000 |
| 70 | SX5688900 | TUBE POMPE/ECHANGEUR (5688900) | 1.000 |
| 72 | SX5687280 | POMPE UP 15-50 AO AV.CONN.2V (5687280) | 1.000 |
| 73 | SX0607290 | DEGAZEUR (607290) | 1.000 |
| 732 | SX0620210 | RESSORT (0620210) | 1.000 |
| 74 | SX5406360 | O-RING 14X1,78 (x3) | 1.000 |
| 75 | SX5404670 | JOINT TUBE/CAISSON (x3) (PDM5404670) | 1.000 |
| 790 | SX710117900 | BORNIER M2 | 1.000 |
| 8 | SX5408080 | TUBE SILICONE PRESSOSTAT 4,8X8 L=270 (x4) (5408080) | 1.000 |
| 80 | SX5659060 | GROUPE RETOUR CHAUFFAGE (5659060) | 1.000 |

ZENIS ST PRIME 1.24 FF - CPD455243220

| Repère | Référence | Désignation | Quantité |
|--------|-----------|-------------------------------------|----------|
| 9 | SX5108700 | DIAPHRAGME D:80 (PDM5108700) | 1.000 |
| 91 | SX5652030 | ROBINET DE VIDANGE (PDM5652030) | 1.000 |
| 92 | SX9951170 | SOUPAPE DE SECURITE 3BARS (9951170) | 1.000 |
| 98 | SX5672960 | TUBE BY PASS (5672960) | 1.000 |
| 99 | SX8380850 | CLIP TUBE BY-PASS | 1.000 |
| 999 | SX8414620 | CABLE M1 ALIM ELEC (8414620) | 1.000 |
| 999 | SX8512600 | CABLE CN2-11/BASSE TENSION | 1.000 |
| 999 | SX8512290 | CABLE CN2-11 BASSE TENSION | 1.000 |
| 999 | SX8512310 | CABLE CN10/M1-ALIM (8512310) | 1.000 |
| 999 | SX8414540 | CABLE M1/TA (8414540) | 1.000 |
| 999 | SX8419080 | CABLE MASSE SIT (8419080) | 1.000 |
| 999 | SX8512270 | CABLE CN1/POMP-V3V-VENT (8512270) | 1.000 |