



LUNA HTE DUO

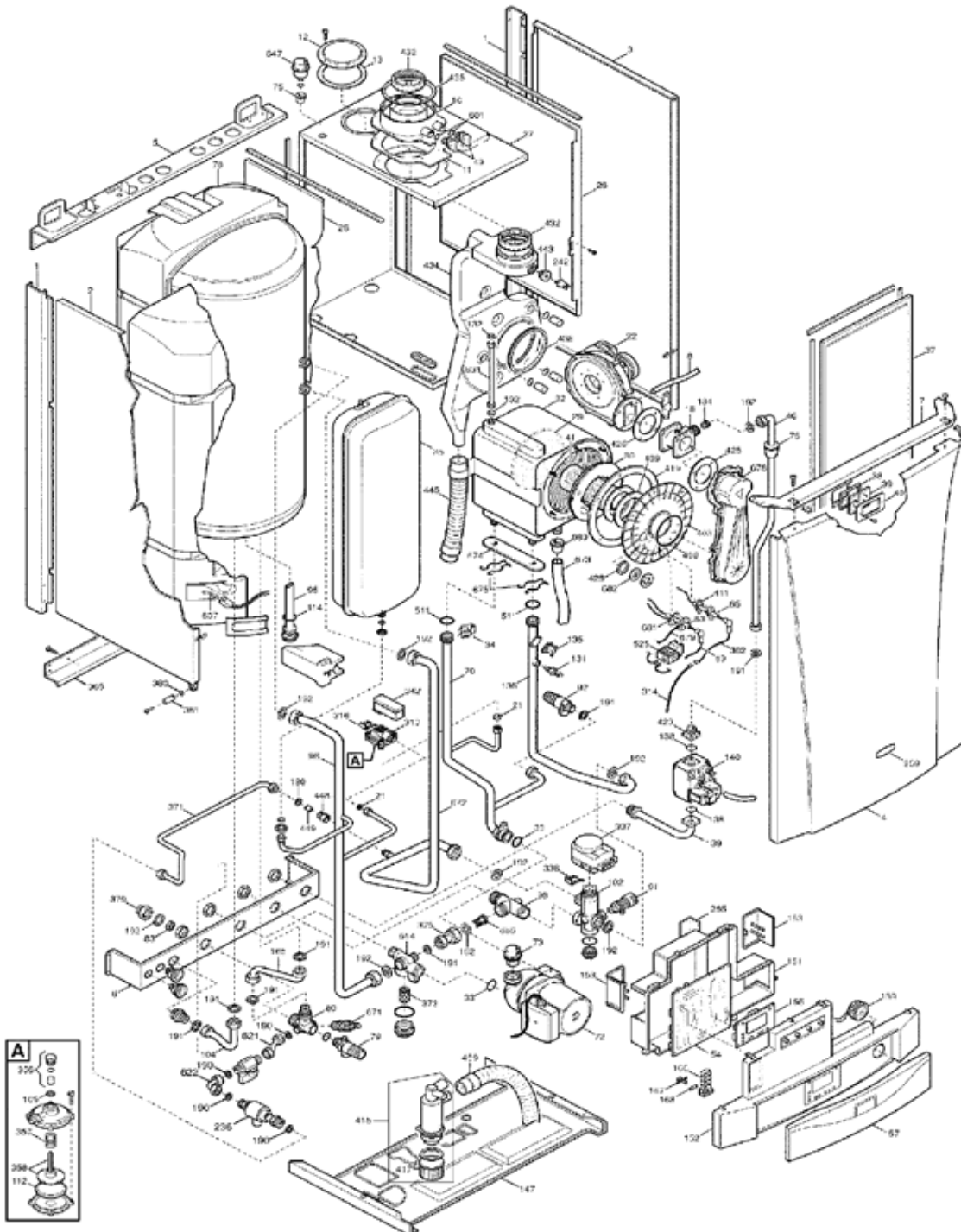
N°1398

HPA437333090/1/2

LUNA 3.33 HTE

Tab 14

Tab 14



HPA437333090_1_2 - LUNA DUO 3.33 HTE

Repère	Référence	Désignation	Quantité
1	SX5106510	MONTANT LATERAL	1.000
1	SX5116480	MONTANT LATERAL (5116480)	1.000
10	SX5409990	RACCORDEMENT VENTOUSE	1.000
102	SX5663040	ENS.VANNE 3 VOIES (5663040)	1.000
104	SX5668570	CONNEXION DEPART ECS	1.000
109	SX5207810	JOINT (x3) (5207810)	1.000
11	SX5409010	JOINT VENTOUSE CAOUTCHOUC (5409010)	1.000
112	SX5405320	MEMBRANE SECURITE DEBIT D'EAU (x3) (PDM5405320)	1.000
114	SX0400200	JOINT 25,2x2,62 (x3)	1.000
12	SX5108690	OBTURATEUR (5108690)	1.000
13	SX5407400	JOINT OBTURATEUR DECOUPE (x3)	1.000
131	SX8434840	SONDE CTN CH et SN HTE (8434840)	1.000
131	SX8435400	SONDE CTN (8435400)	1.000
132	SX5402830	JOINT SONDE SANITAIRE (X10) (PDM5402830)	1.000
134	SX5212150	DIAPHRAGME GAZ D:12 (5212150)	1.000
135	SX9950760	SECURITE SURCHAUFFE 105° (9950760)	1.000
136	SX5666520	TUBE V3V/ECHANGEUR DUO	1.000
138	SX5402010	JOINT O-RING (x3) (PDM5402010)	1.000
139	SX5637870	TUBE ENTREE GAZ	1.000
140	SX5671930	VANNE GAZ SIT 848 SIGMA <40kw	1.000
140	SX5662640	VANNE GAZ SIEMENS VDU(5662640)	1.000
147	SX5116500	PANNEAU INFERIEUR JAQUETTE (5116500)	1.000
147	SX5109720	PANNEAU INFERIEUR (5109720)	1.000
151	SX5409590	COUVERCLE BOIT.ELECT.LUNA HTE (5409590)	1.000
152	SX5668690	PANNEAU COM.LUNA DUO 3.33 FF HTE	1.000
153	SX5407660	COUVERCLE BRANCHE.ELECTRIQUE (5407660)	1.000
154	SX5680200	CIRCUIT IMPRIME LMU54	1.000
154	SX5670360	CIRCUIT IMPRIME SIEMENS LMU5	1.000
154	SX5666510	CIRCUIT IMPRIME SIEMENS LMU5	1.000
154	SX5680190	CIRCUIT IMPRIME (5680190)	1.000
154	SX5677340	CIRCUIT IMPRIME (5677340)	1.000
156	SX5669090	CIRCUIT IMPRI.DISPLAY LUNA HTE (5669090)	1.000
156	SX5663400	CIRCUIT IMPRI.DISPLAY LUNA HTE (5663400)	1.000
157	SX5668750	PORTE BOITIER ELEC.LUNA DUO	1.000
165	SX5668580	TUBE ENTREE SANITAIRE	1.000
166	SX8421590	BORNIER DE RACCORDEMENT (PDM8421590)	1.000
167	SX5405340	PORTE-FUSIBLES (x3) (PDM5405340)	1.000
168	SX9950580	FUSIBLES 2A 250V (X10) (9950580)	1.000
169	SX5656220	MANOMETRE AVEC SUPPORT (5656220)	1.000
18	SX5663330	VENTURI D=24 (5663330)	1.000
190	SX5404970	JOINT 3/8" (x10) (PDM5404970)	1.000
191	SX5408970	JOINT G1/2" (5408970)	1.000
192	SX5404650	JOINT G3/4" 17x24x2 (X10) #	1.000
2	SX5663160	PANNEAU COTE GAUCHE (5663160)	1.000
2	SX5684630	PANNEAU COTE GAUCHE	1.000
21	SX5402050	JOINT 6,1x11,5x1,5 (X3)	1.000
22	SX5662680	VENTILATEUR RG 128/1300	1.000
22	SX5682500	VENTILATEUR RG 128/1300	1.000

HPA437333090_1_2 - LUNA DUO 3.33 HTE

Repère	Référence	Désignation	Quantité
22	SX5686970	VENTILATEUR RG 128/1300	1.000
22	SX5691840	VENTILATEUR RG 128/1300	1.000
236	SX5625310	DISCONNECTEUR CALEFFI DUO (PDM5625310)	1.000
242	SX8434830	SECURITE DE DEBORDEMENT 75° (8434830)	1.000
26	SX5114000	PANNEAU COTE CHAMBRE ETANCHE	1.000
27	SX5116330	CHAMBRE ETANCHE DUO HTE	1.000
27	SX5114510	AN.ARRIERE CHAMBRE ETANCHE	1.000
285	SX5409600	COUVERCLE BRANCH.ELECTRIQUE (5409600)	1.000
29	SX5410450	PANNEAU ISOL.ARRIERE (5410450)	1.000
3	SX5663140	PANNEAU COTE DROIT (5663140)	1.000
3	SX5684620	PANNEAU COTE DROIT (5684620)	1.000
30	SX5409100	PANNEAU ISOLANT (5409100)	1.000
310	SX5641850	PRESSOSTAT POMPE (5641850)	1.000
314	SX8510580	CABLE ELECTRODE IONISATION	1.000
316	SX8380610	RESSORT FIX.MICRO (8380610)	1.000
32	SX5663300	ECHANGEUR PRINCIP.6E (5663300)	1.000
33	SX5403130	O-RING 22X3 EPDM (x3) (5403130)	1.000
336	SX8380680	RESSORT FIX MOTEUR V3V	1.000
337	SX5647340	MOTEUR V3V ELBI	1.000
34	SX5113650	CLIPS ECHANGEUR PRINCIPAL	1.000
342	SX5641800	MICRO-INTERRUPTEUR V3V	1.000
35	SX5629130	VASE D'EXPANSION 7,5L	1.000
356	SX5634820	BOUCHON AVANT (GROUPE) (5634820)	1.000
357	SX8380600	RESSORT SECURITE DEBIT D'EAU (8380600)	1.000
358	SX5634830	BOUCHON PRESSOSTAT (5634830)	1.000
365	SX5106530	TRAVERSE ARRIERE INFERIEURE	1.000
37	SX5666790	PANNEAU AVANT CHAMBRE ETANCHE	1.000
37	SX5689680	PAN.AVANT CHAMBRE ETANCHE	1.000
371	SX5668590	TUBE REMPLISSAGE CIRCUIT CHAUFFAGE	1.000
373	SX5109080	FILTRE CHAUFFAGE (PDM5109080)	1.000
375	SX5663030	TUBE BY-PASS (5663030)	1.000
379	SX5206120	REDUCTION FM G 3/4-1/2 (5206120)	1.000
38	SX5401610	JOINT HUBLLOT (x3) (5401610)	1.000
380	SX5400620	JOINT 4,47x1,78 (5400620)	1.000
381	SX5209830	PIVOT PANNEAU COMMANDE (5209830)	1.000
382	SX8511130	CABLE ELECTRODE IONISATION	1.000
382	SX8419910	CABLE D'IONISATION (8419910)	1.000
39	SX5203930	HUBLLOT (5203930)	1.000
4	SX5659960	PANNEAU AVANT ZENIS 3.28 (5659960)	1.000
4	SX5686140	PANNEAU AVANT	1.000
40	SX5103360	COUVERCLE HUBLLOT (5103360)	1.000
408	SX5211790	BRIDE RACCORD ECHANGEUR (5211790)	1.000
409	SX5409090	JOINT ECHANGEUR HTE (5409090)	1.000
41	SX5663430	BRULEUR 6 BECS (5663430)	1.000
411	SX5409110	JOINT ELECTRODE IONI.(5409110)	1.000
415	SX5677920	BOITIER SIPHON HYDRAULIQUE (5677920)	1.000
415	SX5409060	BOITIER SIPHON HYDRAULIQUE (5409060)	1.000
417	SX615380	GROUP BOUCHON SIPHON HYD/JOINT	1.000

HPA437333090_1_2 - LUNA DUO 3.33 HTE

Repère	Référence	Désignation	Quantité
419	SX5409080	JOINT BRIDE/ECHANGEUR (5409070)	1.000
423	SX5210410	RACCORD VANNE GAZ	1.000
425	SX5411420	JOINT EXTRACTEUR (5411420)	1.000
425	SX5409130	JOINT EXTRACTEUR (5409130)	1.000
428	SX5409290	JOINT HUBLLOT (X3) (5409290)	1.000
432	SX5410420	JOINT FUMEEES Ø60	1.000
434	SX5409910	COLLECTEUR FUMEEES NUVOLA HTE	1.000
434	SX5682330	COLLECTEUR DE FUMEE DUO HTE	1.000
435	SX5407550	JOINT FUMEEES Ø100 (5407550)	1.000
438	SX5409050	JOINT COLLECT/FUMEEES (5409050)	1.000
438	SX5410480	JOINT COLLECT/FUMEEES (5410480)	1.000
443	SX5212090	RACCORD SECU.DEBORD. (5212090)	1.000
445	SX5409310	TUBE SIPHON HYDRAU. (5409310)	1.000
448	SX5209230	PORTE CLAPET ANTIRETOUR	1.000
449	SX5640030	CLAPET ANTI RETOUR (5640030)	1.000
458	SX5409350	O-RING 2,62x58,42	1.000
459	SX5411610	EVACUATION CONDENSAT EPDM	1.000
46	SX5666540	TUBE GAZ	1.000
49	SX5409280	BOUCHON RACCORD.VENTOUSE (5409280)	1.000
5	SX5114030	TRAVERSE ARRIERE SUPERIEURE	1.000
511	SX5404600	O-RING 17,86X2,62 (X3)	1.000
514	SX5663010	RACCORD R.C/POMPE/FILTRE (5663010)	1.000
525	SX8434850	ALLUMEUR ANSTOS ZAG2V(8434850)	1.000
525	SX8435220	ALLUMEUR ANSTOS ZAG 2V (8435220)	1.000
525	SX616800	ALLUMEUR ANSTOS	1.000
59	SX8510970	CABLE ELECTRODE D'ALLUMAGE (8510970)	1.000
59	SX8419900	CABLE ELECTRODE D'ALLUMAGE (8419900)	1.000
6	SX5106550	TRAVERSE PLATINE HYDRAULIQUE (5106550)	1.000
601	SX5408560	O-RING 8,73X1,78 (x3) (5408560)	1.000
607	SX8434930	SONDE CTN SANITAIRE	1.000
621	SX5663120	TUBE REMPLISSAGE /CHAUFFAGE (5663120)	1.000
622	SX5622860	TUBE BALLON/DISCONNECTEUR	1.000
63	SX8422830	ELECTRODE D'ALLUMAGE LUNA HTE (8422830)	1.000
631	SX5663310	TUBE DEGAZEUR (5663310)	1.000
647	SX5652730	DEGAZEUR G 3/8 (5652730)	1.000
65	SX8422840	ELECTRODE IONIS.LUNA HTE (8422840)	1.000
671	SX5646780	ROBINET DE VIDANGE (5646780)	1.000
672	SX5668560	TUBE SORTIE SERPENT/RAC/PRESS.	1.000
673	SX5410030	TUBE PVC 15x23 L=280	1.000
674	SX5409410	JOINT ECHANGEUR 5/6E (x4) (5409410)	1.000
675	SX8380780	RESSORT FIXAT.ECHANG.(8380780)	1.000
678	SX5665130	ENS.COUCVERCLE AIR/GAZ(5665130)	1.000
679	SX8510980	CABLE MASSE ELECTRODE ALLUMAGE (8510980)	1.000
679	SX8419920	CABLE MASSE ELECTRODE ALLUMAGE (8419920)	1.000
680	SX5409250	JOINT PASSE-TUBE D:15	1.000
681	SX5409120	JOINT ELECTRODE ALLU.(5409120)	1.000
682	SX5211800	HUBLLOT (5211800)	1.000
686	SX5663020	CLAPET ANTI-RETOUR (5663020)	1.000

HPA437333090_1_2 - LUNA DUO 3.33 HTE

Repère	Référence	Désignation	Quantité
7	SX5107950	TRAVERSE SUPERIEURE AVANT (5107950)	1.000
70	SX5666530	TUBE POMPE-ECHANGEUR DUO	1.000
72	SX5655620	POMPE GRUNDFOS 15/60 (5655620)	1.000
73	SX0607290	DEGAZEUR (607290)	1.000
75	SX5409240	JOINT TUBE/CAISSON D:10 (5409240)	1.000
78	SX5668540	BALLON	1.000
79	SX9950610	SOUPAPE DE SECURITE 7BARS	1.000
8	SX5410080	TUBE SILICONE PRESSOST.LG:800	1.000
80	SX5668600	RACCORD ENTREE SANITAIRE	1.000
83	SX5620090	LIMITEUR DEBIT SANIT.12L/MN	1.000
91	SX5652030	ROBINET DE VIDANGE (PDM5652030)	1.000
92	SX9950600	SOUPAPE DE SECURITE 3BARS	1.000
95	SX5668740	ANODE MAGNESIUM	1.000
96	SX5668550	TUBE V3V ENTREE SERPENTIN	1.000
98	SX5212040	TUBE BY-PASS CHAUFFAGE (5212040)	1.000
999	SX5663850	CABLE PREDISPOSITION THERMOSTATS (5663850)	1.000
999	SX8414620	CABLE M1 ALIM ELEC (8414620)	1.000
999	SX8510540	CABLE CONTROLE EXTRACTEUR	1.000
999	SX8510570	CABLE VANNE GAZ	1.000
999	SX8510530	CABLE EXTRACTEUR THERMOS.FUMEE	1.000
999	SX8419990	CABLE CONNEX.CIRCUIT (8419990)	1.000
999	SX8510560	CABLE VANNE 3V	1.000
999	SX8419950	CABLE BARRETTE CONNEXION ELECTRIQUE (8419950)	1.000
999	SX8511550	CABLE VANNE GAZ (8511550)	1.000
999	SX8510550	CABLE SONDE CTN CHAUF POMPE BAL.	1.000