

SPARE PARTS EXPLODED VIEW GAS-WALL BOILER ATM. BURNER

Model

URBIA - SERELIA NOX

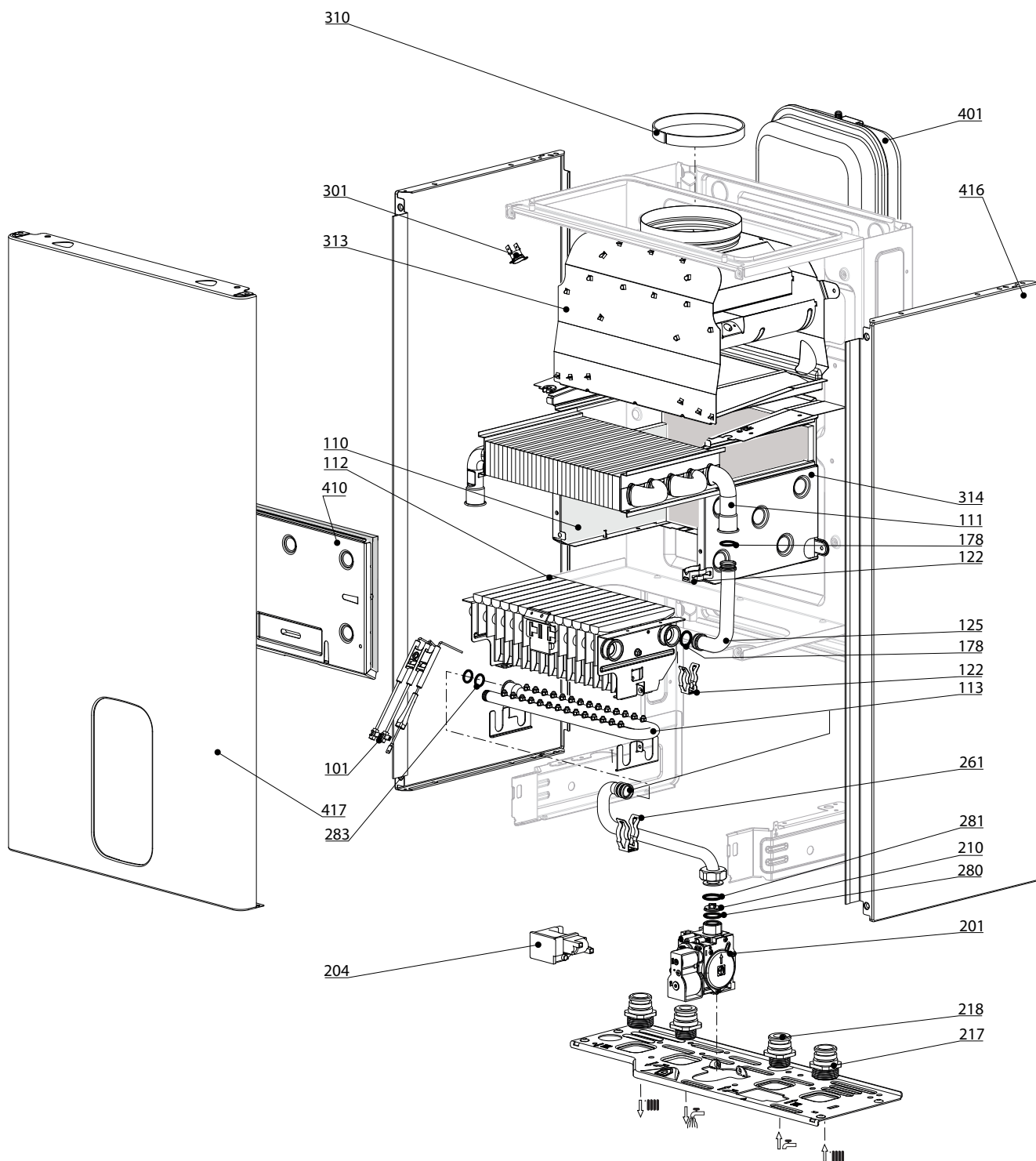
R8203525-07 - 26/07/2023

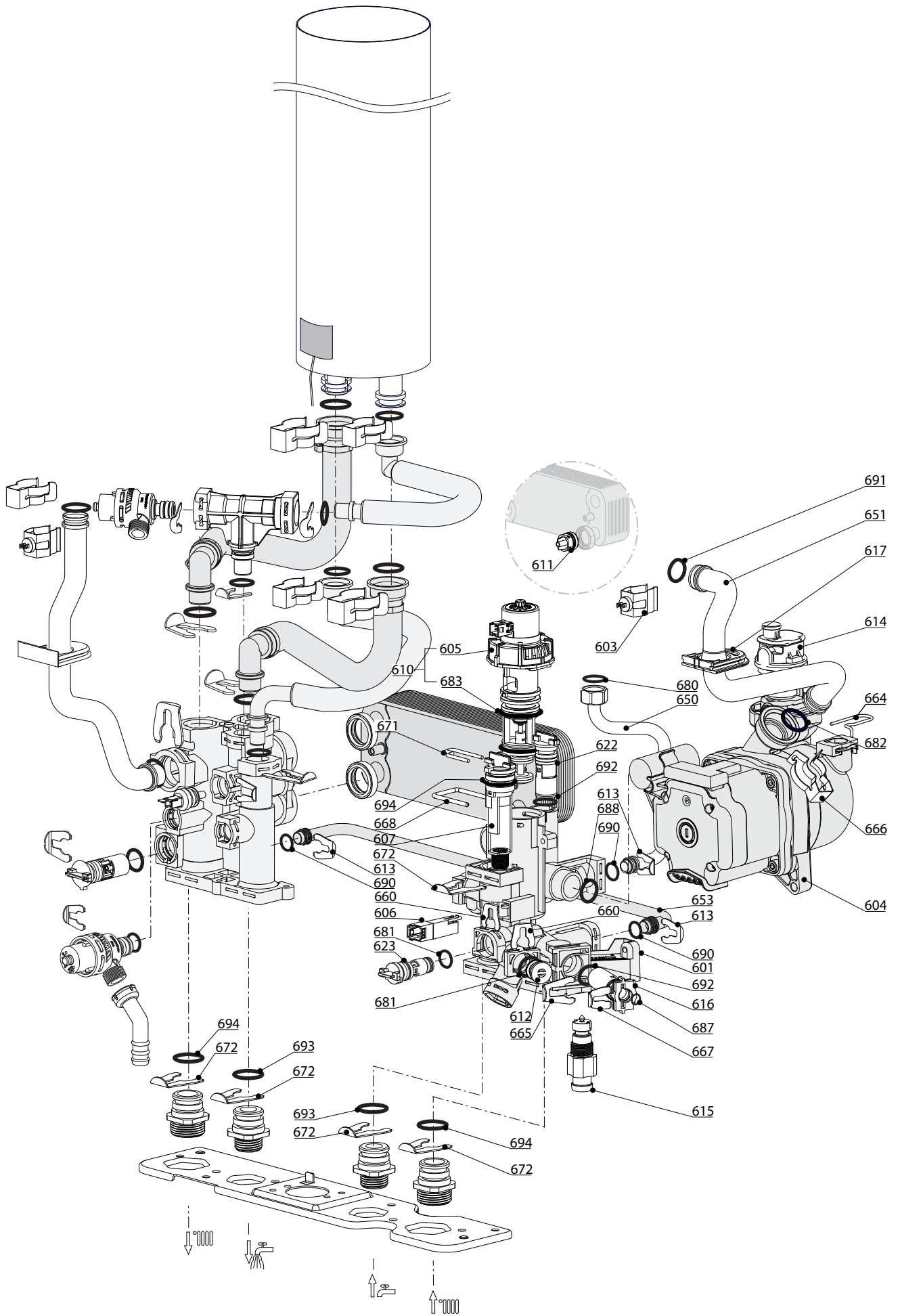
1	3310629	URBIA NOX 25 CF FR	08-2018	-
2	3310628	URBIA NOX 24 VMC FR	08-2018	-
3	3310630	SERELIA NOX 25 CF FR	08-2018	-
4	3310631	SERELIA NOX 24 VMC FR	08-2018	-
Col	Reference	Model type	Begin	End

100
200
300
400

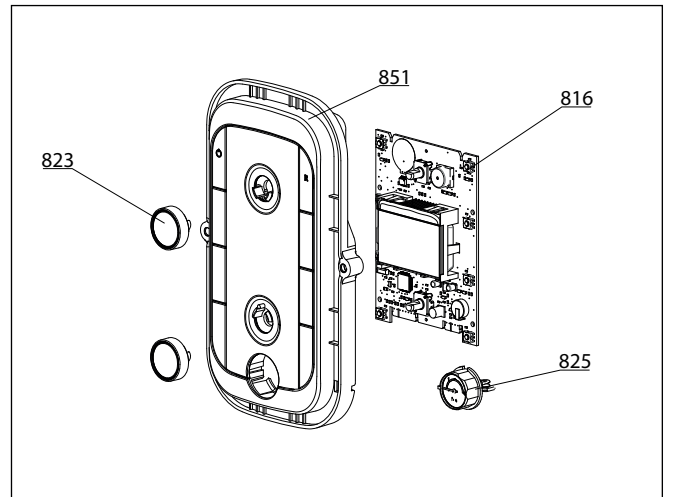
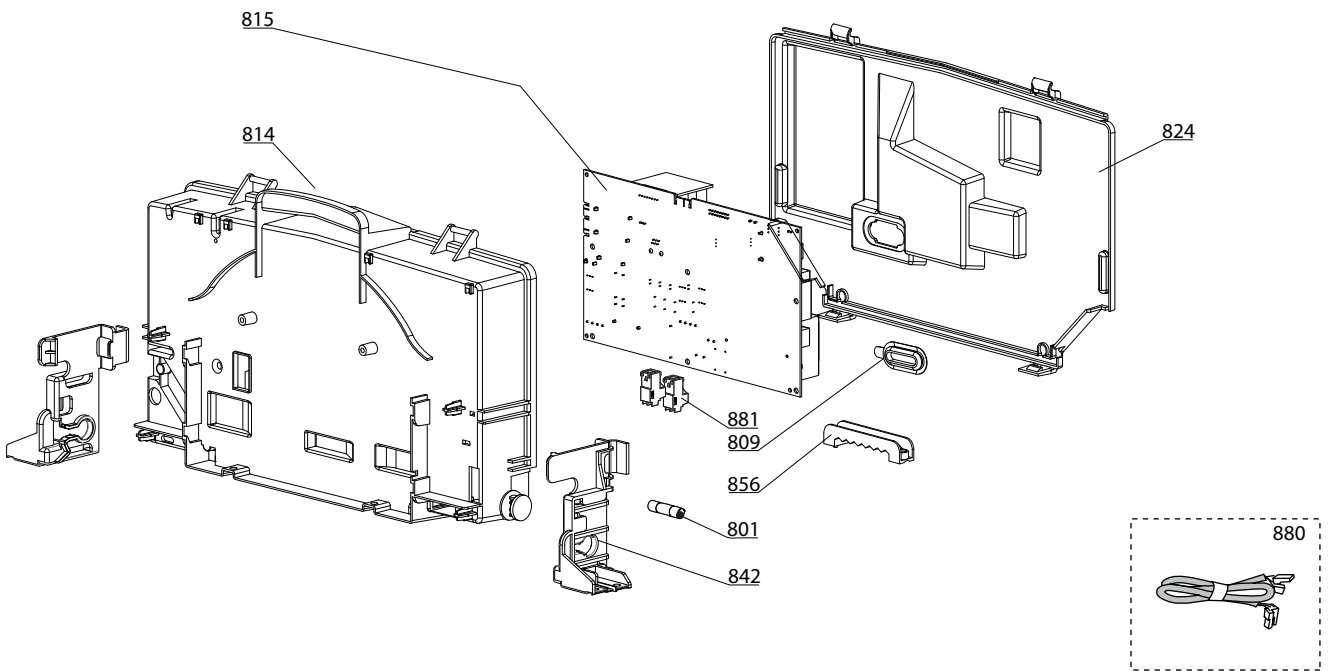
URBIA - SERELIA NOX

Gas-wall boiler atm. burner





800



5000

- 5001
- Transf. gaz
 - Conv. gas
 - Trasf. gas
 - Transf. gas

URBIA NOX 25 CF
 URBIA NOX 24 VMC
 SERELIA NOX 25 CF
 SERELIA NOX 24 VMC



	Description	Manf. Pt. N	Type																						
				1	2	3	4	5	6	7	8	9	10	11	12	13	14	15	16	17	18	From	to		
0800	ELECTRICAL BOX																								
0801	FUSE 5X20 RIT.2 A 250V	65112137		•	•	•																			
0809	GROMMET(PCD TOOL ACCESS)	998382		•	•	•																			
0814	CONTROL PANEL BASE	64980075		•	•	•																			
0815	P.C.B. (MAIN)	65115783-05		•	•	•																			
0816	P.C.B. (DISPLAY)	60002839-03		•	•	•																			
0823	WHITE KNOB	60002840		•	•	•																			
0824	CONTROL PANEL COVER (REAR)	65121563		•	•	•																			
0825	PRESSURE GAUGE	60002838		•	•	•																			
0842	SIDE COVER SUPPORT	65115810		•	•	•																			
0851	FRONT CONTROL PANEL COMPLETE	65117670		•	•																				
	FRONT CONTROL PANEL COMPLETE	65117693				•	•																		
0856	CABLE CLAMP	65103377		•	•	•																			
0880	3-WAY VALVE CABLE	65117674		•	•	•																			
	CABLE (IONIZATION ELECTRODE)	60001883		•	•	•																			
	DISPLAY WIRING - 5 WIRES BLUES	60000746		•	•	•																			
	EARTH WIRE	65104286		•	•	•																			
	FEEDER 240V	60001619		•	•	•																			
	HEAT SENSOR CABLE	60001882		•	•	•																			
	NTC - PRES SWITCH CABLE	65117656				•	•																		
	PUMP CABLE SE	65115788		•	•	•																			
	WIRING (NTC PROB.-FUMES THERM.-MODULAT.)	65115789		•		•																			
0881	CONNECTOR 2P	65111933		•	•	•																			
	CONNECTOR 3P (x5)	65111934-01		•	•	•																			
5000	ACCESSORIES																								
5001	BURNER JET FULL LPG KIT G31 24 KW	65118069-01		•		•																			
	BURNER JET FULL NG KIT G20	65118068-01		•	•	•	•																		
	KIT SHUNT	65118073		•		•																			

URBIA - SERELIA NOX

Gas-wall boiler atm. burner

LIST OF THE ABBREVIATIONS

HW	: Hot water.
CW	: Cold water.
C	: Ceramic resistance (normal heating).
Ca	: Ceramic resistance (accelerated heating)
TP	: Immersion heater.
1F	: With fittings.
2F	: Without fittings.
3F	: With fittings and another outlet connection.
AMI	: With mixing valve.
SMI	: Without mixing valve.
PUISS	: Power of th appliance.
PN	: Appliance with normal pression.
LP	: Appliance with low pression.
PV	: Appliance with variable power.
PF	: Appliance with fixed power.

IDENTIFICATION PLATE

SERIAL NUMBER

10 Characters :	04 05 125 011		
		Sequential number	
		Manufacturing day	
		Year of manufacture	
11 Characters :	1 95 065004 - 31		
Month of manufacture :		Technical number of the appliance	
from 1 to 9 → Jan. to Sep.,		Sequential number	
O → Oct., N → Nov.,		Year of manufacture	
D → Dec.			
19 Characters :	08 05 0013199 900640031		
Year of manufacture		Product reference	
Month of manufacture		Sequential number	
20 Characters :	3675007 XX 2 07 070 00315		
Product reference		Sequential number	
Millenium of manufacture		Manufacturing day	
		Year of manufacture	
21 Characters :	3675007 XX 07 070 0000315		
Product reference		Sequential number	
Year of manufacture		Manufacturing day	