

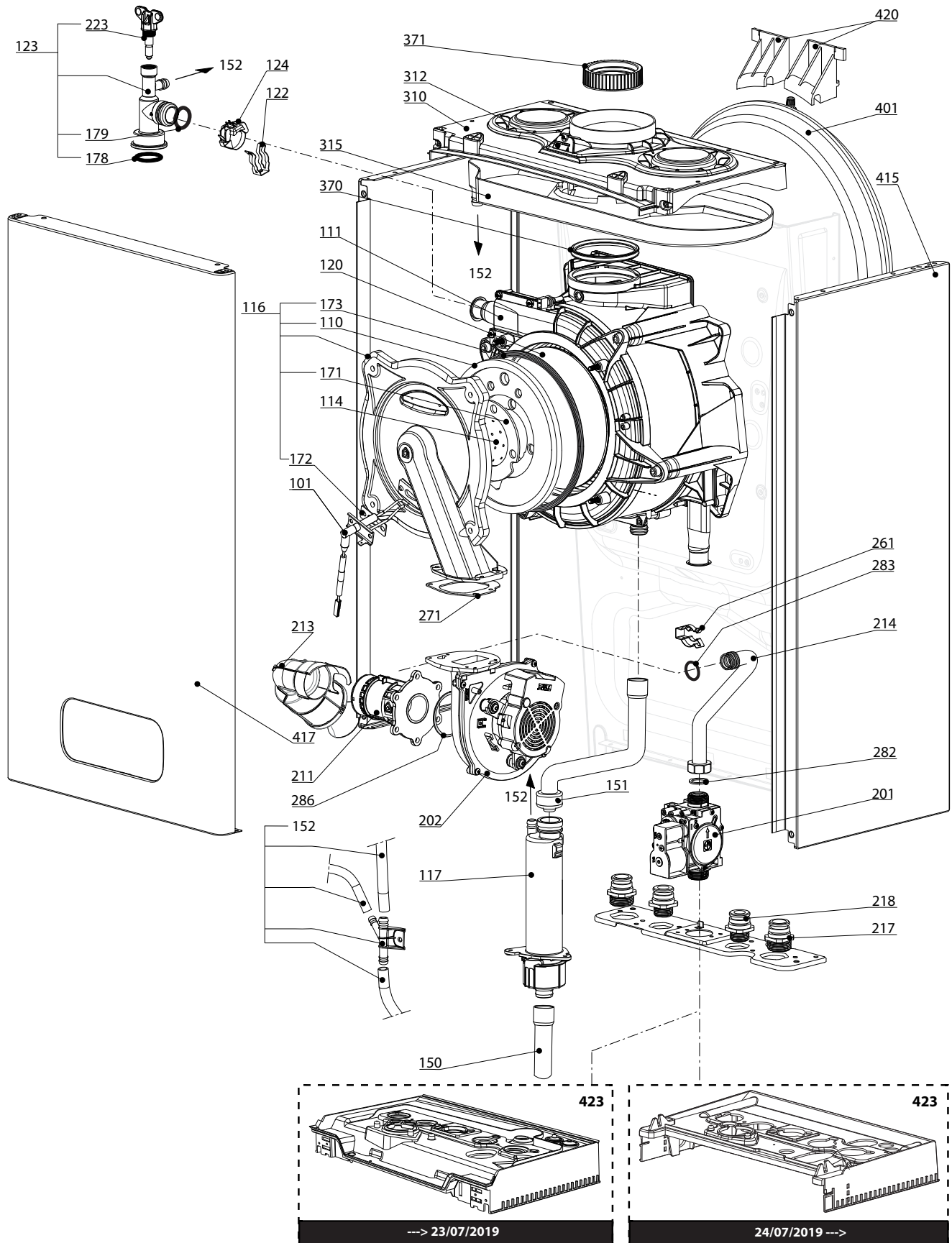
SPARE PARTS EXPLODED VIEW  
GAS-WALL CONDENSING BOILERS

Model

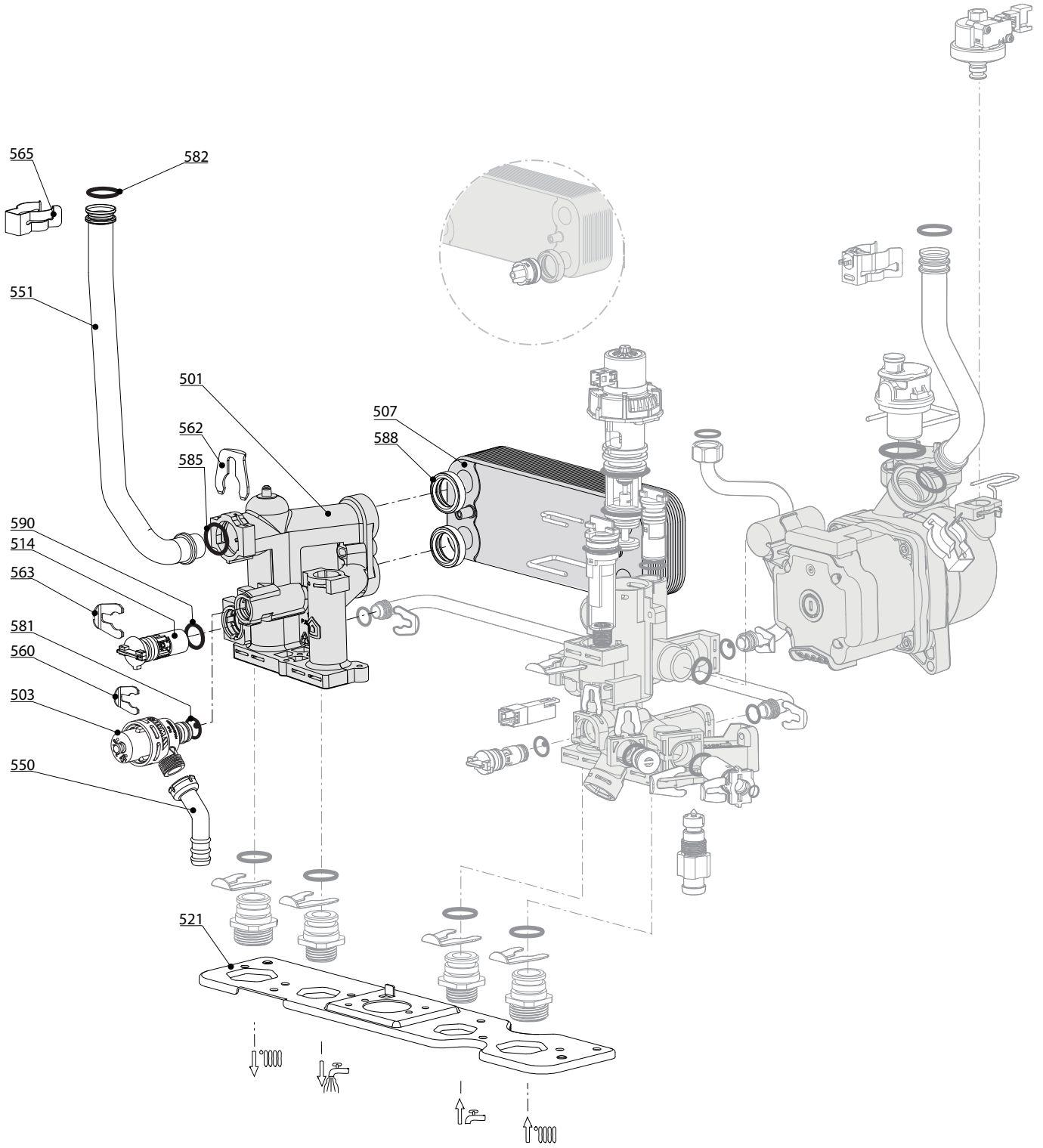
**INOA GREEN ULTRA**

R8203488-05 - 29/07/2021

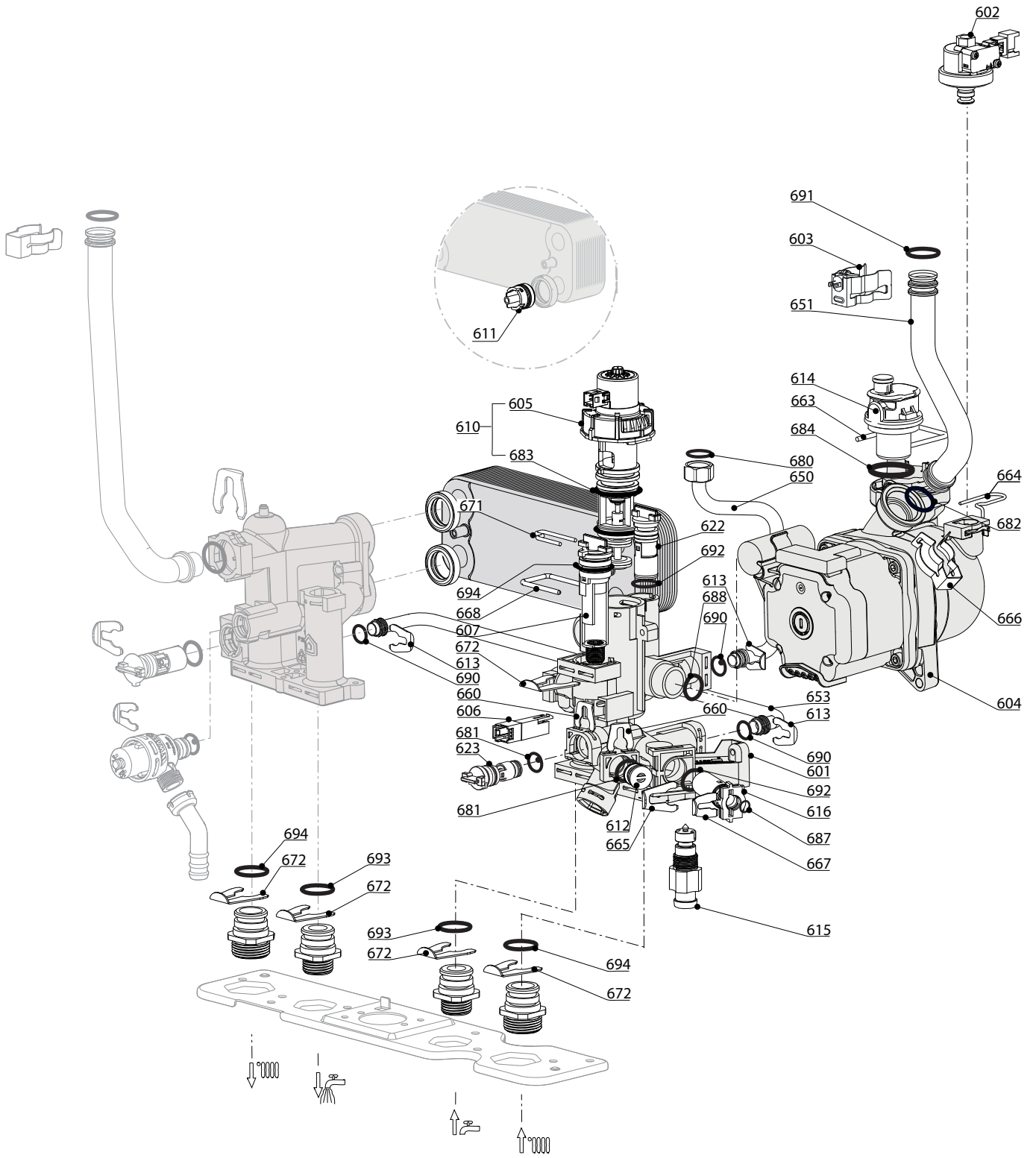
1	3310546	INOA GREEN ULTRA 25 FR	07-2017	-
2	3310547	INOA GREEN ULTRA 30 FR	07-2017	-
Col	Reference	Model type	Begin	End







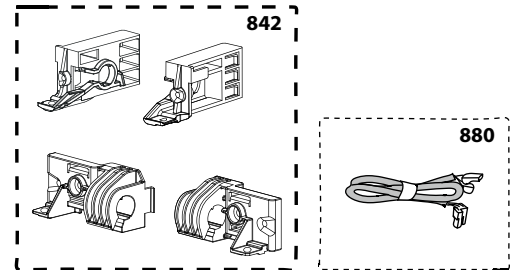
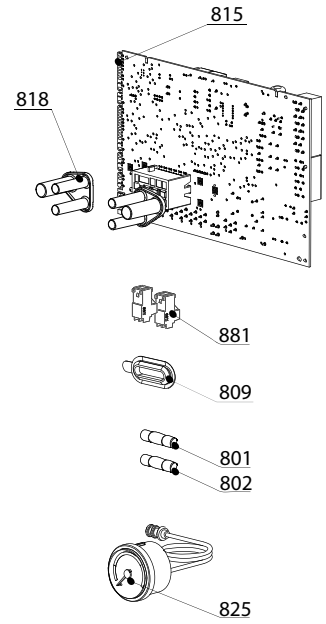
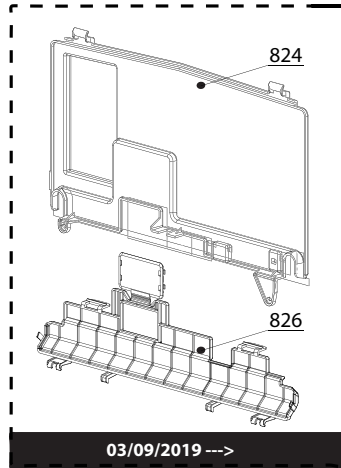
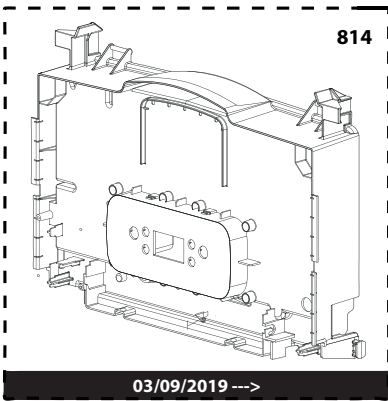
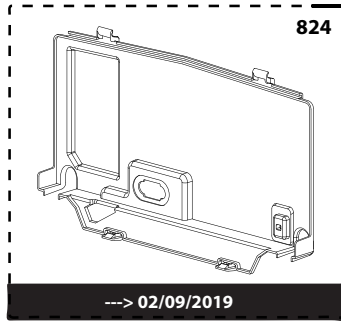
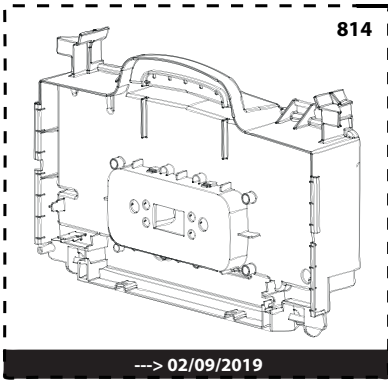




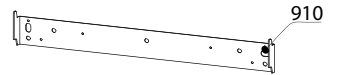
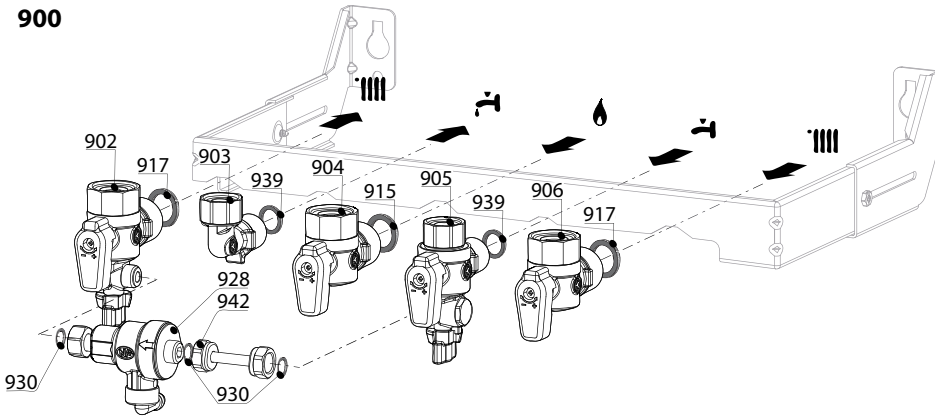
INOA GREEN ULTRA 25  
INOA GREEN ULTRA 30

31

	Description	Manf. Pt. N	Type	1 2 3 4 5 6 7 8 9 10 11 12 13 14 15 16 17 18																		From	to
<b>0600</b>	<b>RETURN GROUP</b>																						
0601	RETURN GROUP	65116833		●	●																	06/18	
	RETURN GROUP	65117954		●	●																07/18		
0602	LOW PRESSURE SWITCH	65115792		●	●																		
0603	TEMPERATURE PROBE + CLIP	990686-01		●	●																		
0604	PUMP 5M PWM TACO	65116908-03	TACO	●	●																		
0605	MOTOR (3-WAY VALVE)	65114936		●	●																		
0606	SENSOR (REED)	65114921-01		●	●																		
0607	FLOW METER CAP	65114919		●	●																		
0610	MOTOR + SPRING 3 WAY VALVE KIT	65114924		●	●																		
0611	RIDUCTORS (KIT)	65116836		●	●																		
0612	PLUG	65114920		●	●																		
0613	CLIP D:10	65104260		●	●																		
0614	AUTO AIR VENT PANASONIC	65116392	PANA.	●	●																		
	AUTO AIR VENT TACO ENER+	65112086	TACO	●	●																		
0615	DRAIN COCK	65114922		●	●																		
0616	WATER FILTER	65114923		●	●																		
0622	BY-PASS	65114917		●	●																		
0623	CHECK VALVE CARTRIDGE	65114918-01		●	●																		
0650	PIPE (EXPANSION VESSEL)	65116542		●	●																		
0651	PIPE (C.H. RETURN)	65116543		●	●																		
0653	BY-PASS PIPE	65116210		●	●																	06/18	
0660	CLIP D:10	65114933		●	●																		
0663	U-CLIP	65104704		●	●																		
0664	CLIP	65104322		●	●																		
0665	CLIP D:12	65114932		●	●																		
0666	CLIP	60000309		●	●																		
0667	CLIP D:6	65100680		●	●																		
0668	CLIP	65114927		●	●																		
0671	CLIP	65114926		●	●																		
0672	CLIP D:19	65114931		●	●																		
0680	GASKET 3/8	573521		●	●																		
0681	O-RING 9.9X2.62	65114937		●	●																		
0682	O-RING 17.04X3.53	65104262		●	●																		
0683	O-RING 23.47X2.62	65114939		●	●																		
0684	O-RING 3X35 EPDM 75 SH	65104705		●	●																		
0687	O-RING 5.7X1.9	61009834-10		●	●																		
0688	O-RING 21.89X2.62	65104320		●	●																		
0690	O-RING 8.9X2.7	61009834-14		●	●																		
0691	O-RING 17.86X2.62	61308091		●	●																		
0692	O-RING 11.91X2.62	65114940		●	●																		
0693	O-RING 15.88X2,62	65114941		●	●																		
0694	O-RING 17.13X2.62	65114938		●	●																		



900



5000

5001	5002	5004	5020
Transf. gaz G31 Conv. gas G31 Trasf. gas G31 Transf. gas G31	Transf. gaz GN G20 Conv. gas NG G20 Trasf. gas MET G20 Transf. gas GN G20	Transf. gaz G130/25/2350 Conv. gas G130/25/2350 Trasf. gas G130/25/2350 Transf. gas G130/25/2350	Options Accessories Opzioni Accessorio





## LIST OF THE ABBREVIATIONS

HW .....	: Hot water.
CW .....	: Cold water.
C .....	: Ceramic resistance (normal heating).
Ca .....	: Ceramic resistance (accelerated heating)
TP .....	: Immersion heater.
1F .....	: With fittings.
2F .....	: Without fittings.
3F .....	: With fittings and another outlet connection.
AMI .....	: With mixing valve.
SMI .....	: Without mixing valve.
PUISS .....	: Power of th appliance.
PN .....	: Appliance with normal pression.
LP .....	: Appliance with low pression.
PV .....	: Appliance with variable power.
PF .....	: Appliance with fixed power.

## IDENTIFICATION PLATE

### SERIAL NUMBER

<b>10 Characters :</b>	04 05 125 011	
		Sequential number
		Manufacturing day
		Year of manufacture
<b>11 Characters :</b>	1 95 065004 - 31	
Month of manufacture :		Technical number of the appliance
from 1 to 9 → Jan. to Sep.,		Sequential number
O → Oct., N → Nov.,		Year of manufacture
D → Dec.		
<b>19 Characters :</b>	08 05 0013199 900640031	
Year of manufacture		Product reference
Month of manufacture		Sequential number
<b>20 Characters :</b>	3675007 XX 2 07 070 00315	
Product reference		Sequential number
Millenium of manufacture		Manufacturing day
		Year of manufacture
<b>21 Characters :</b>	3675007 XX 07 070 0000315	
Product reference		Sequential number
Year of manufacture		Manufacturing day