



SPARE PARTS EXPLODED VIEW  
GAS-WALL BOILER ATM. BURNER

Model

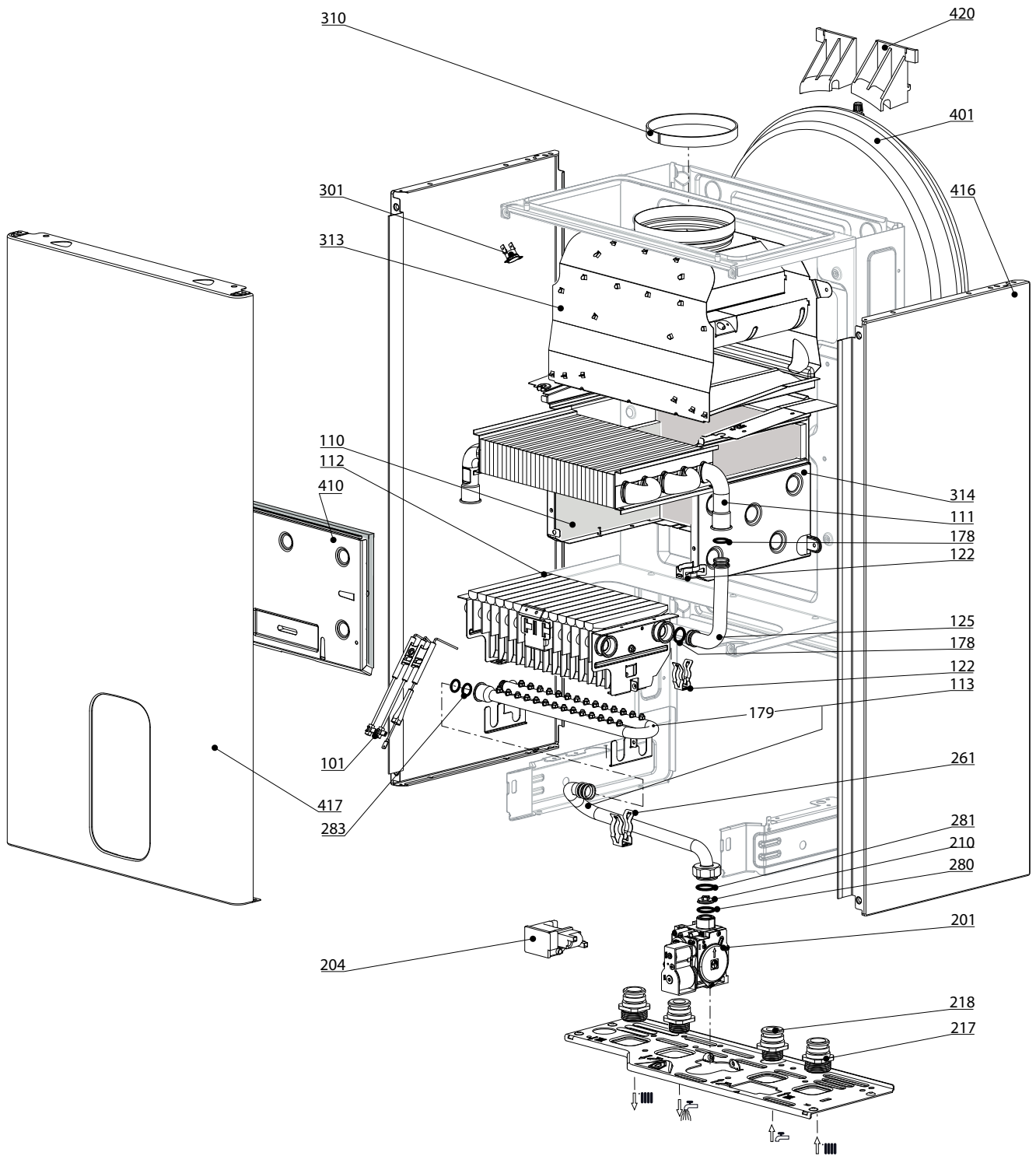
**MIRA C NOX**

R8203523-08 - 29/10/2020

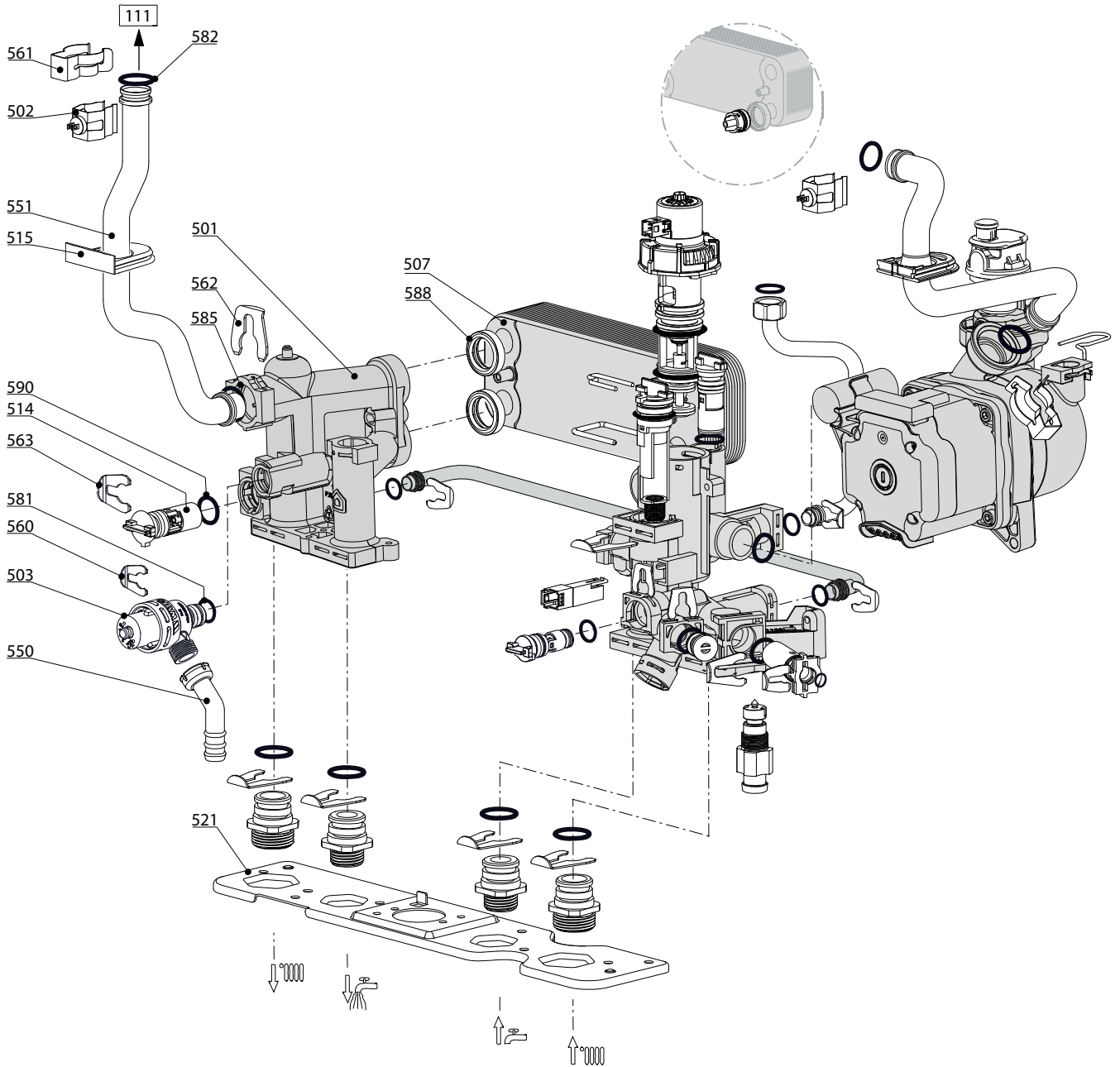
MIRA C NOX

Gas-wall boiler atm. burner

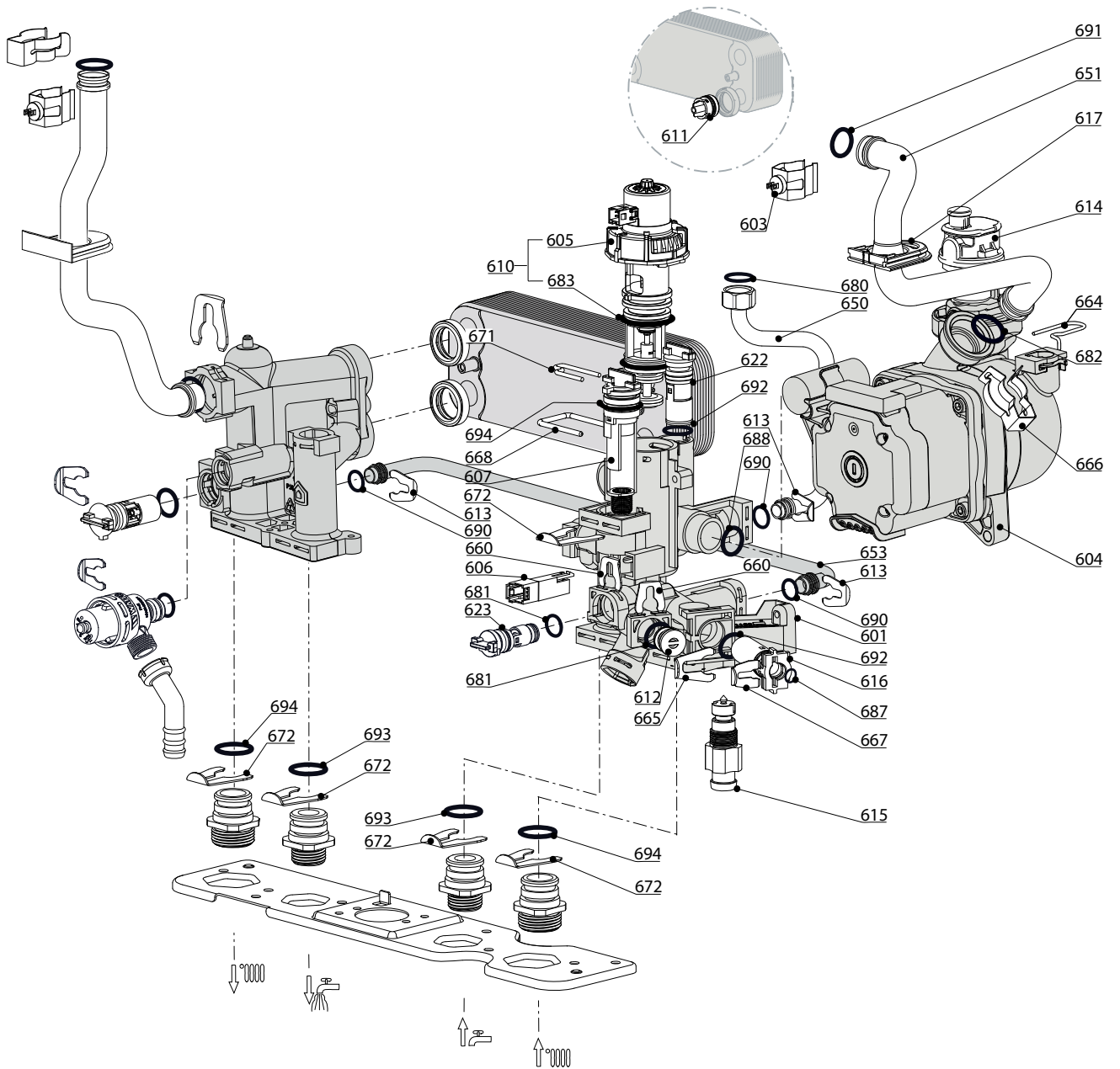
1	3310633	MIRA C NOX 25 CF FR	08-2018	-
2	3310632	MIRA C NOX 24 VMC FR	08-2018	-
Col	Reference	Model type	Begin	End





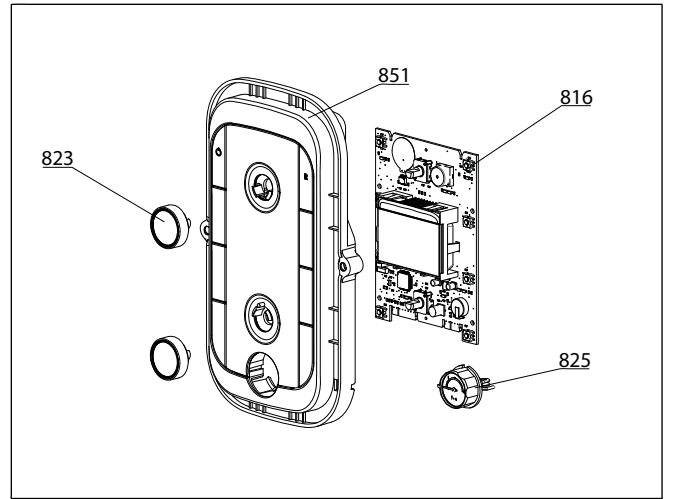
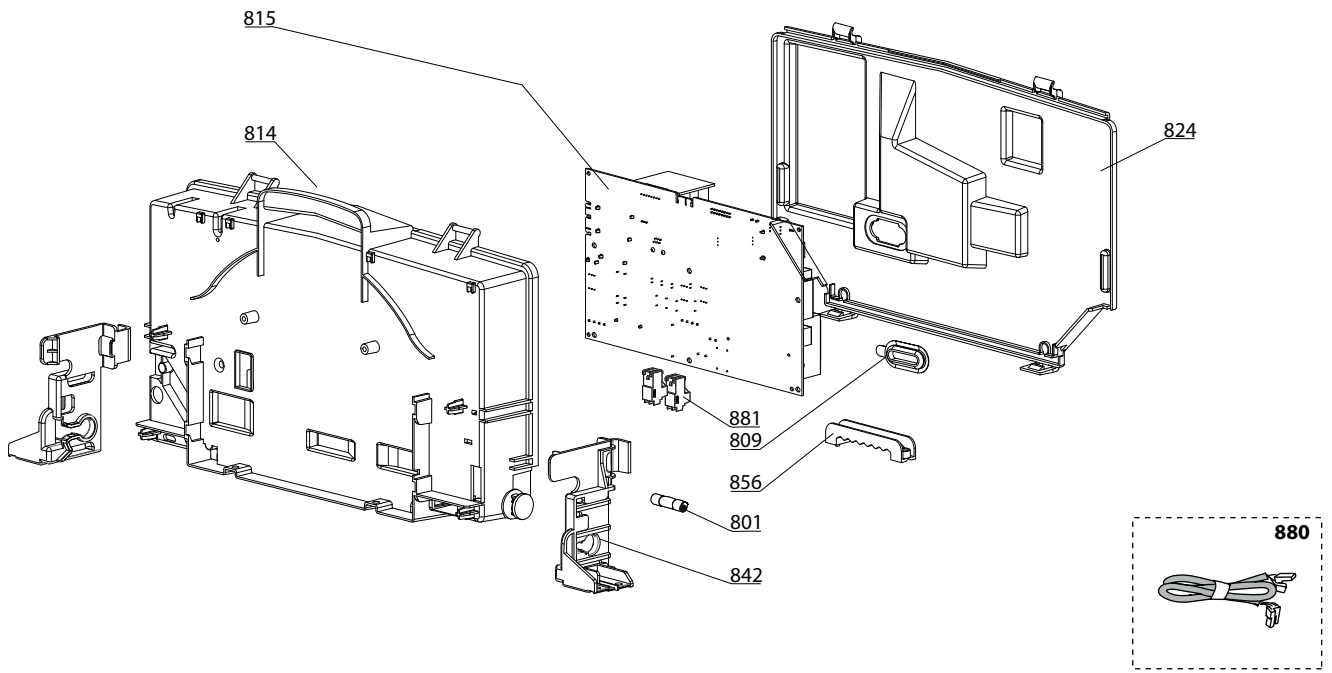






MIRA C NOX 25CF PR  
MIRA C NOX 24 VMC

Description	Manf. Pt. N	Type	MIRA C NOX 25CF PR / MIRA C NOX 24 VMC																		From	to
			1	2	3	4	5	6	7	8	9	10	11	12	13	14	15	16	17	18		
<b>0600 RETURN GROUP</b>																						
0601 RETURN GROUP	65116833		●	●																		05/18
0601 RETURN GROUP	65117954		●	●																	06/18	
0603 TEMPERATURE PROBE + CLIP	990686-01		●	●																		
0604 PUMP 5M PWM TACO	65116908-03	TACO	●	●																		
0605 MOTOR (3-WAY VALVE)	65114936		●	●																		
0606 SENSOR (REED)	65114921-01		●	●																		
0607 FLOW METER CAP	65114919		●	●																		
0610 MOTOR + SPRING 3 WAY VALVE KIT	65114924		●	●																		
0611 RIDUCTORS (KIT)	65116836		●	●																		
0612 PLUG	65114920		●	●																		
0613 CLIP D10	65104260		●	●																		
0614 AUTO AIR VENT - PANASONIC	65116392	PANA.	●	●																		
0614 AUTO AIR VENT - TACO ENER+	65112086	TACO	●	●																		
0615 DRAIN COCK	65114922		●	●																		
0616 WATER FILTER	65114923		●	●																		
0617 GROMMET	60000808		●	●																		
0622 BY-PASS	65114917		●	●																		
0623 CHECK VALVE CARTRIDGE	65114918-01		●	●																		
0650 PIPE (EXPANSION VESSEL)	65115068		●	●																		
0651 PIPE (C.H. RETURN)	65117621		●	●																		
0653 BY-PASS PIPE	65116210		●	●																		05/18
0660 CLIP D:10	65114933		●	●																		
0664 CLIP	65104322		●	●																		
0665 CLIP D:12	65114932		●	●																		
0666 CLIP	60000309		●	●																		
0667 CLIP D:6	65100680		●	●																		
0668 CLIP	65114927		●	●																		
0671 CLIP	65114926		●	●																		
0672 CLIP D=19	65114931		●	●																		
0680 GASKET 3/8 in	573521		●	●																		
0681 O-RING 9.9X2.62	65114937		●	●																		
0682 O-RING 17.04X3.53	65104262		●	●																		
0683 O-RING 23.47X2.62	65114939		●	●																		
0687 O-RING 5.7X1.9	61009834-10		●	●																		
0688 O-RING 21.89X2.62	65104320		●	●																		
0690 O-RING 8.9X2.7	61009834-14		●	●																		
0691 O-RING 17.86X2.62	61308091		●	●																		
0692 O-RING 11.91X2.62	65114940		●	●																		
0693 O-RING 15.88X2.62	65114941		●	●																		
0694 O-RING 17.13X2.62	65114938		●	●																		



5000

- 5001**
- Transf.gaz
  - Conv.gas
  - Trasf.gas
  - Transf.gas





## LIST OF THE ABBREVIATIONS

HW .....	: Hot water.
CW .....	: Cold water.
C .....	: Ceramic resistance (normal heating).
Ca .....	: Ceramic resistance (accelerated heating)
TP .....	: Immersion heater.
1F .....	: With fittings.
2F .....	: Without fittings.
3F .....	: With fittings and another outlet connection.
AMI .....	: With mixing valve.
SMI .....	: Without mixing valve.
PUISS .....	: Power of th appliance.
PN .....	: Appliance with normal pression.
LP .....	: Appliance with low pression.
PV .....	: Appliance with variable power.
PF .....	: Appliance with fixed power.

## IDENTIFICATION PLATE

### SERIAL NUMBER

<b>10 Characters :</b>	04 05 125 011	Sequential number
		Manufacturing day
		Year of manufacture
<b>11 Characters :</b>	1 95 065004 - 31	Technical number of the appliance
Month of manufacture : from 1 to 9 → Jan. to Sep., O → Oct., N → Nov., D → Dec.		Sequential number
		Year of manufacture
<b>19 Characters :</b>	08 05 0013199 900640031	Product reference
Year of manufacture		Sequential number
Month of manufacture		
<b>20 Characters :</b>	3675007 XX 2 07 070 00315	Sequential number
Product reference		Manufacturing day
Millenium of manufacture		Year of manufacture
<b>21 Characters :</b>	3675007 XX 07 070 0000315	Sequential number
Product reference		Manufacturing day
Year of manufacture		