

SPARE PARTS EXPLODED VIEW GAS-WALL BOILER ATM. BURNER

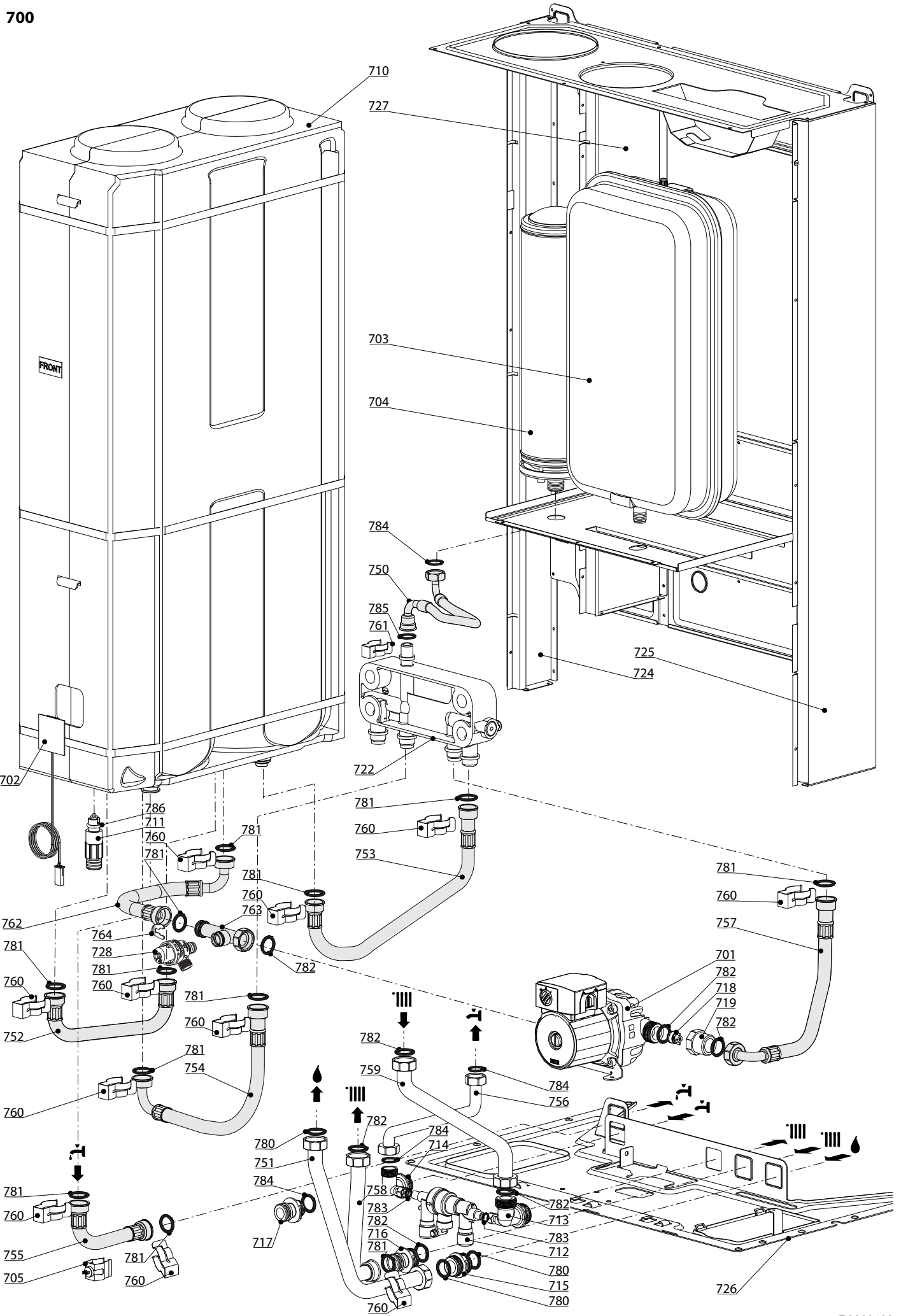
Model

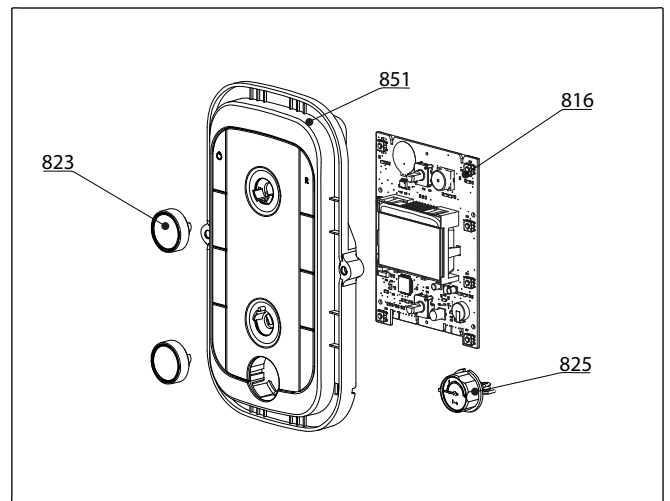
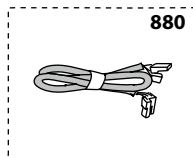
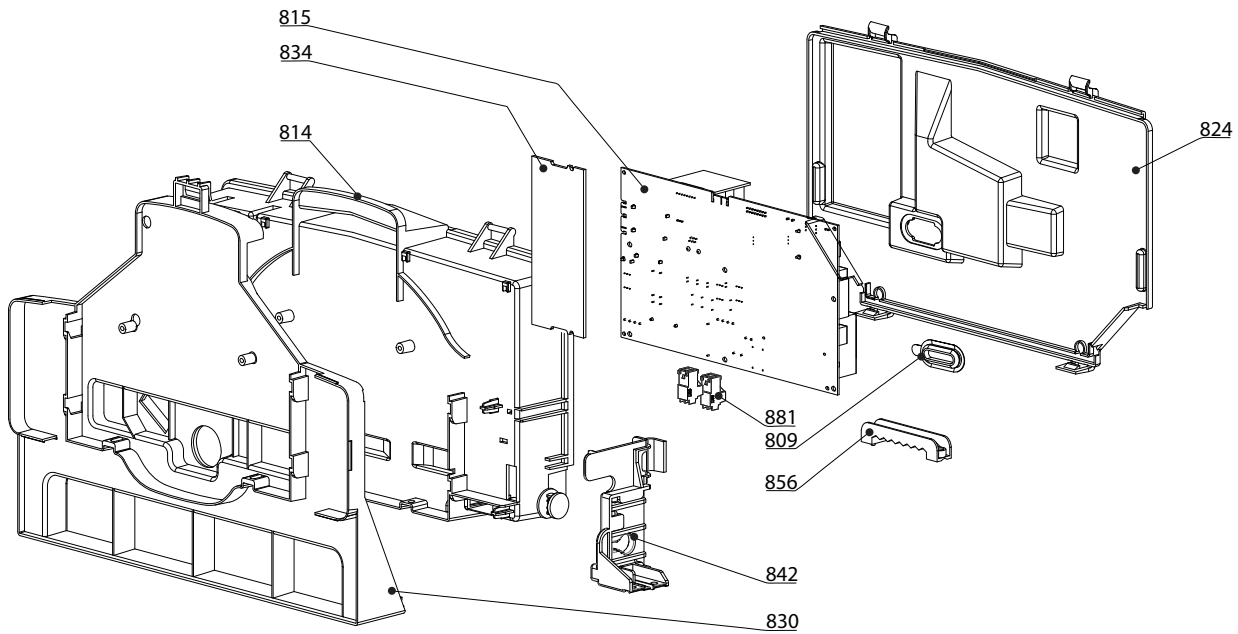
NIAGARA C NOX

R8203526-07 - 26/05/2022

1	3310570	NIAGARA C NOX 25 CF FR	08-2018	-
2	3310571	NIAGARA C NOX 25 VMC FR	08-2018	-
Col	Reference	Model type	Begin	End

☉⇒	Description	Manf. Pt. N	Type																			
				1	2	3	4	5	6	7	8	9	10	11	12	13	14	15	16	17	18	From
0100	BURNER ASSEMBLY																					
0101	KIT ELECTRODE (NIAGARA NOX)	65119089		●	●																	
0110	PANELS (KIT)	65117633		●	●																	
0111	HEAT EXCHANGER (Cu)	65104247		●	●																	
0112	BURNER 14NP	65117623		●	●																	
0113	BURNER JET FULL LPG KIT G31 24 KW GAS MANIFOLD NG G20 + TUBE	65118069-01 65118692		●	●																	
0122	CLIP	65116517		●	●																	
0125	PIPE	65117625		●	●																	
0178	O-RING 17.86X2.62	61308091		●	●																	
0200	GAS SECTION																					
0201	GAS VALVE SIT 845 SIGMA	65117618		●	●																	
0204	SPARK GENERATOR	60001888		●	●																	
0210	RESTRICTOR D: 5.9	65117655		●	●																	
0217	CH ADAPTER 3/4	65114929		●	●																	
0218	DHW ADAPTER 1/2	65114930		●	●																	
0261	CLIP	65105109		●	●																	
0280	O-RING 14X2	60000903		●	●																	
0281	SHEET GASKET D: 24-18.2-1.5	60022835-01		●	●																	
0283	OR 13,94+2,62 NBR 70	65117642		●	●																	
0300	FAN ASSEMBLY																					
0301	OVERHEAT THERMOSTAT 49C THERMOSTAT 75-65°C	61310767 999539			●																	
0310	FLUE SPIGOT D: 125->130	65111183		●	●																	
0313	FLUE HOOD 24 CF FLUE HOOD 24 CF VMC	65117627 65117628		●																		
0314	COMBUSTION CHAMBER	65117631		●	●																	
0400	SEALED CASE																					
0410	PANEL (COMBUSTION CHAMBER)	65117632		●	●																	
0415	CASE PANEL (L.H. SIDE)	65105676		●	●																	
0416	RIGHT SIDE PANEL	60001245		●	●																	
0417	CASE PANEL (FRONT)	65117724		●	●																	
0422	HAND PANEL	60001244		●	●																	





5000

5001

Gas conv. LPG G30/G31
 Transf. gaz GPL G30/G31
 Trasn. gas GPL G30/G31
 Transf. gas GLP G30/G31
 Flüssiggas Umstellset
 F-gas G30/G31
 Ombouwset
 LPG G30/G31

5002

Gas conv. NG G20
 Transf. gaz GN G20
 Trasn. gas MET G20
 Transf. gas GN G20
 Flüssiggas Umstellset
 E-gas G20
 Ombouwset
 A-gas G20

5020

Accessories
 Options
 Opzioni
 Accessorio
 Zubehör
 Opties

LIST OF THE ABBREVIATIONS

HW	: Hot water.
CW	: Cold water.
C	: Ceramic resistance (normal heating).
Ca	: Ceramic resistance (accelerated heating)
TP	: Immersion heater.
1F	: With fittings.
2F	: Without fittings.
3F	: With fittings and another outlet connection.
AMI	: With mixing valve.
SMI	: Without mixing valve.
PUISS	: Power of th appliance.
PN	: Appliance with normal pression.
LP	: Appliance with low pression.
PV	: Appliance with variable power.
PF	: Appliance with fixed power.

IDENTIFICATION PLATE

SERIAL NUMBER

10 Characters :	04 05 125 011	Sequential number
		Manufacturing day
		Year of manufacture
11 Characters :	1 95 065004 - 31	Technical number of the appliance
Month of manufacture :		Sequential number
from 1 to 9 → Jan. to Sep.,		Year of manufacture
O → Oct., N → Nov.,		
D → Dec.		
19 Characters :	08 05 0013199 900640031	Product reference
Year of manufacture		Sequential number
Month of manufacture		
20 Characters :	3675007 XX 2 07 070 00315	Sequential number
Product reference		Manufacturing day
Millenium of manufacture		Year of manufacture
21 Characters :	3675007 XX 07 070 0000315	Sequential number
Product reference		Manufacturing day
Year of manufacture		